



ATLAS FASTENER  
**Grade 2 (A307) Hex Bolts**  
*Zinc, Galvanized, Plain*



- Hex Bolts - standard thread pitch
- Grade 2 (A307)
- Zinc, Galvanized, Plain Black, Yellow Zinc Finish Available

MBS#	Description	Finishes available
<b>Grade 2 (A307) Hex Bolts</b>		
	1/4-20 x 1/2"	Zinc, Galv, Plain
	1/4-20 x 5/8"	Zinc
	1/4-20 x 3/4"	Zinc, Galv, Plain
	1/4-20 x 7/8"	Zinc
	1/4-20 x 1"	Zinc, Galv, Plain
	1/4-20 x 1 1/4"	Zinc, Plain
	1/4-20 x 1 1/2"	Zinc, Galv, Plain, Yellow
	1/4-20 x 1 3/4"	Zinc, Plain
	1/4-20 x 2"	Zinc, Galv, Plain
	1/4-20 x 2 1/4"	Zinc, Plain
	1/4-20 x 2 1/2"	Zinc, Galv, Plain
	1/4-20 x 2 3/4"	Zinc, Plain
	1/4-20 x 3"	Zinc, Galv, Plain
	1/4-20 x 3 1/4"	Zinc
	1/4-20 x 3 1/2"	Zinc, Galv, Plain
	1/4-20 x 4"	Zinc, Galv, Plain
	1/4-20 x 4 1/2"	Zinc, Galv, Plain
	1/4-20 x 5"	Zinc, Galv, Plain, Yellow
	1/4-20 x 5 1/2"	Zinc, Galv, Plain
	1/4-20 x 6"	Zinc, Galv, Plain
	1/4-20 x 6 1/2"	Zinc, Plain
	1/4-20 x 7"	Zinc, Galv, Plain
	1/4-20 x 7 1/2"	Zinc, Plain
	1/4-20 x 8"	Zinc, Plain
	5/16-18 x 1 1/2"	Zinc, Plain
	5/16-18 x 5/8"	Zinc, Plain
	5/16-18 x 3/4"	Zinc, Plain
	5/16-18 x 7/8"	Zinc
	5/16-18 x 1"	Zinc, Galv, Plain
	5/16-18 x 1 1/4" 5/16-18 x 1 1/2"	Zinc, Galv, Plain
	5/16-18 x 1 1/2"	Zinc, Galv, Plain
	5/16-18 x 1 3/4"	Zinc, Plain
	5/16-18 x 2"	Zinc, Galv, Plain
	5/16-18 x 2 1/4"	Zinc, Galv, Plain
	5/16-18 x 2 1/2"	Zinc, Galv, Plain
	5/16-18 x 2 3-4"	Zinc
	5/16-18 x 3"	Zinc, Galv, Plain
	5/16-18 x 3 1/4"	Zinc
	5/16-18 x 3 1/2"	Zinc, Galv, Plain
	5/16-18 x 3 3/4"	Zinc
	5/16-18 x 4"	Zinc, Galv, Plain

MBS#	Description	Finishes available
	5/16-18 x 4 1/2"	Zinc, Galv, Plain
	5/16-18 x 5"	Zinc, Galv, Plain
	5/16-18 x 5 1/2"	Zinc, Galv, Plain
	5/16-18 x 6"	Zinc, Galv, Plain
	5/16-18 x 6 1/2"	Zinc, Plain
	5/16-18 x 7"	Zinc, Plain
	5/16-18 x 7 1/2"	Zinc, Plain
	5/16-18 x 8"	Zinc, Plain
	3/8-16 x 1 1/2"	Zinc, Plain
	3/8-16 x 5/8"	Zinc
	3/8-16 x 3/4"	Zinc, Plain
	3/8-16 x 7/8"	Zinc
	3/8-16 x 1"	Zinc, Galv, Plain
	3/8-16 x 1 1/4"	Zinc, Galv, Plain
	3/8-16 x 1 1/2"	Zinc, Galv, Plain, Yellow
	3/8-16 x 1 3/4"	Zinc, Galv, Plain
	3/8-16 x 2"	Zinc, Galv, Plain
	3/8-16 x 2 1/4"	Zinc, Galv, Plain
	3/8-16 x 2 1/2"	Zinc, Galv, Plain
	3/8-16 x 2 3/4"	Zinc, Plain
	3/8-16 x 3"	Zinc, Galv, Plain
	3/8-16 x 3 1/4"	Zinc, Plain
	3/8-16 x 3 1/2"	Zinc, Galv, Plain
	3/8-16 x 3 3/4"	Zinc
	3/8-16 x 4"	Zinc, Galv, Plain
	3/8-16 x 4 1/2"	Zinc, Galv, Plain
	3/8-16 x 5"	Zinc, Galv, Plain
	3/8-16 x 5 1/2"	Zinc, Galv, Plain
	3/8-16 x 6"	Zinc, Galv, Plain
	3/8-16 x 6 1/2"	Zinc, Galv, Plain
	3/8-16 x 7"	Zinc, Galv, Plain
	3/8-16 x 7 1/2"	Zinc, Plain
	3/8-16 x 8"	Zinc, Galv, Plain
	3/8-16 x 8 1/2"	Zinc, Galv, Plain
	3/8-16 x 9" 3/8-16 x 9 1/2"	Zinc, Galv, Plain
	3/8-16 x 9 1/2"	Zinc
	3/8-16 x 10"	Zinc, Galv, Plain
	3/8-16 x 11"	Zinc, Galv, Plain
	3/8-16 x 12"	Zinc, Galv, Plain
	7/16-14 x 3/4"	Zinc, Plain
	7/16-14 x 1"	Zinc, Plain
	7/16-14 x 1 1/4"	Zinc, Plain
	7/16-14 x 1 1/2"	Zinc, Plain
	7/16-14 x 2"	Zinc, Galv, Plain
	7/16-14 x 2 1/2"	Zinc, Plain
	7/16-14 x 3"	Zinc, Plain
	7/16-14 x 3 1/2"	Zinc, Plain
	7/16-14 x 4"	Zinc, Plain
	7/16-14 x 4 1/2"	Zinc, Plain
	7/16-14 x 5"	Zinc, Plain
	7/16-14 x 5 1/2"	Plain
	7/16-14 x 6"	Zinc, Plain
	7/16-14 x 7"	Zinc, Plain



MBS#	Description	Finishes available
	7/16-14 x 8"	Zinc, Plain
	1/2-13 x 3/4"	Zinc, Plain
	1/2-13 x 1"	Zinc, Galv, Plain
	1/2-13 x 1 1/4"	Zinc, Galv, Plain
	1/2-13 x 1 1/2"	Zinc, Galv, Plain
	1/2-13 x 1 3/4"	Zinc, Galv, Plain
	1/2-13 x 2"	Zinc, Galv, Plain
	1/2-13 x 2 1/4"	Zinc, Galv, Plain
	1/2-13 x 2 1/2"	Zinc, Galv, Plain
	1/2-13 x 2 3/4"	Zinc, Galv, Plain
	1/2-13 x 3"	Zinc, Galv, Plain
	1/2-13 x 3 1/4"	Zinc, Plain
	1/2-13 x 3 1/2"	Zinc, Galv, Plain
	1/2-13 x 3 3/4"	Zinc, Plain
	1/2-13 x 4"	Zinc, Galv, Plain
	1/2-13 x 4 1/2"	Zinc, Galv, Plain
	1/2-13 x 5"	Zinc, Galv, Plain
	1/2-13 x 5 1/2"	Zinc, Galv, Plain
	1/2-13 x 6"	Zinc, Galv, Plain
	1/2-13 x 6 1/2"	Zinc, Galv, Plain
	1/2-13 x 7"	Zinc, Galv, Plain
	1/2-13 x 7 1/2"	Zinc, Galv, Plain
	1/2-13 x 8"	Zinc, Galv, Plain
	1/2-13 x 8 1/2"	Zinc, Galv, Plain
	1/2-13 x 9"	Zinc, Galv, Plain
	1/2-13 x 9 1/2"	Zinc, Galv, Plain
	1/2-13 x 10"	Zinc, Galv, Plain
	1/2-13 x 10 1/2"	Zinc, Galv, Plain
	1/2-13 x 11"	Zinc, Galv, Plain
	1/2-13 x 11 1/2"	Zinc, Plain
	1/2-13 x 12"	Zinc, Galv, Plain

**Longer Sizes available. Call for Details**

	5/8-11 x 1"	Zinc, Galv, Plain
	5/8-11 x 1 1/4"	Zinc, Galv, Plain
	5/8-11 x 1 1/2"	Zinc, Galv, Plain
	5/8-11 x 1 3/4"	Zinc, Galv, Plain
	5/8-11 x 2"	Zinc, Galv, Plain
	5/8-11 x 2 1/4"	Zinc, Galv, Plain
	5/8-11 x 2 1/2"	Zinc, Galv, Plain
	5/8-11 x 2 3/4"	Zinc, Galv, Plain
	5/8-11 x 3"	Zinc, Galv, Plain
	5/8-11 x 3 1/4"	Zinc, Plain
	5/8-11 x 3 1/2"	Zinc, Galv, Plain
	5/8-11 x 3 3/4"	Zinc, Galv, Plain
	5/8-11 x 4"	Zinc, Galv, Plain
	5/8-11 x 4 1/2"	Zinc, Galv, Plain
	5/8-11 x 5"	Zinc, Galv, Plain
	5/8-11 x 5 1/2"	Zinc, Galv, Plain
	5/8-11 x 6"	Zinc, Galv, Plain
	5/8-11 x 6 1/2"	Zinc, Galv, Plain
	5/8-11 x 7"	Zinc, Galv, Plain
	5/8-11 x 7 1/2"	Zinc, Galv, Plain
	5/8-11 x 8"	Zinc, Galv, Plain
	5/8-11 x 8 1/2"	Zinc, Galv, Plain

MBS#	Description	Finishes available
	5/8-11 x 9"	Zinc, Galv, Plain
	5/8-11 x 9 1/2"	Zinc, Galv, Plain
	5/8-11 x 10"	Zinc, Galv, Plain
	5/8-11 x 10 1/2"	Zinc, Galv, Plain
	5/8-11 x 11"	Zinc, Galv, Plain
	5/8-11 x 11 1/2"	Zinc
	5/8-11 x 12"	Zinc, Galv, Plain

**Longer sizes available. Call for details**

	3/4-10 x 1"	Zinc
	3/4-10 x 1 1/4"	Zinc, Plain
	3/4-10 x 1 1/2"	Zinc, Galv, Plain
	3/4-10 x 1 3/4"	Zinc, Galv, Plain
	3/4-10 x 2"	Zinc, Galv, Plain
	3/4-10 x 2 1/4"	Zinc, Galv, Plain
	3/4-10 x 2 1/2"	Zinc, Galv, Plain
	3/4-10 x 2 3/4"	Zinc, Galv, Plain
	3/4-10 x 3"	Zinc, Galv, Plain
	3/4-10 x 3 1/4"	Zinc, Galv, Plain
	3/4-10 x 3 1/2"	Zinc, Galv, Plain
	3/4-10 x 3 3/4"	Zinc, Plain
	3/4-10 x 4"	Zinc, Galv, Plain
	3/4-10 x 4 1/2"	Zinc, Galv, Plain
	3/4-10 x 5"	Zinc, Galv, Plain
	3/4-10 x 5 1/2"	Zinc, Galv, Plain
	3/4-10 x 6"	Zinc, Galv, Plain
	3/4-10 x 6 1/2"	Zinc, Galv, Plain
	3/4-10 x 7"	Zinc, Galv, Plain
	3/4-10 x 7 1/2"	Zinc, Galv, Plain
	3/4-10 x 8"	Zinc, Galv, Plain
	3/4-10 x 8 1/2"	Zinc, Galv, Plain
	3/4-10 x 9"	Zinc, Galv, Plain
	3/4-10 x 9 1/2"	Zinc, Galv, Plain
	3/4-10 x 10"	Zinc, Galv, Plain
	3/4-10 x 10 1/2"	Zinc, Galv, Plain
	3/4-10 x 11"	Zinc, Galv, Plain
	3/4-10 x 11 1/2"	Zinc, Plain
	3/4-10 x 12"	Zinc, Galv, Plain

**Longer sizes available. Call for details.**

	7/8-9 x 1 1/2"	Zinc, Plain
	7/8-9 x 1 3/4"	Zinc, Plain
	7/8-9 x 2"	Zinc, Galv, Plain
	7/8-9 x 2 1/4"	Zinc, Plain
	7/8-9 x 2 1/2"	Zinc, Galv, Plain
	7/8-9 x 2 3/4"	Zinc, Plain
	7/8-9 x 3"	Zinc, Galv, Plain
	7/8-9 x 3 1/4"	Zinc, Plain
	7/8-9 x 3 1/2"	Zinc, Galv, Plain
	7/8-9 x 3 3/4"	Zinc, Galv, Plain
	7/8-9 x 4"	Zinc, Galv, Plain
	7/8-9 x 4 1/2"	Zinc, Galv, Plain
	7/8-9 x 5"	Zinc, Galv, Plain
	7/8-9 x 5 1/2"	Zinc, Galv, Plain
	7/8-9 x 6"	Zinc, Galv, Plain
	7/8-9 x 6 1/2"	Zinc, Plain



MBS#	Description	Finishes available
	7/8-9 x 7"	Zinc, Galv, Plain
	7/8-9 x 7 1/2"	Zinc, Plain
	7/8-9 x 8"	Zinc, Galv, Plain
	7/8-9 x 8 1/2"	Zinc, Plain
	7/8-9 x 9"	Zinc, Galv, Plain
	7/8-9 x 9 1/2"	Zinc, Plain
	7/8-9 x 10"	Zinc, Galv, Plain
	7/8-9 x 10 1/2"	Zinc, Plain
	7/8-9 x 11"	Zinc, Galv, Plain
	7/8-9 x 12"	Zinc, Galv, Plain

**Longer sizes available. Call for details.**

	1-8 x 2"	Zinc, Galv, Plain
	1-8 x 2 1/4"	Zinc, Plain
	1-8 x 2 1/2"	Zinc, Galv, Plain
	1-8 x 2 3/4"	Zinc, Plain
	1-8 x 3"	Zinc, Galv, Plain
	1-8 x 3 1/4"	Zinc, Plain
	1-8 x 3 1/2"	Zinc, Galv, Plain
	1-8 x 3 3/4"	Zinc, Plain
	1-8 x 4"	Zinc, Galv, Plain
	1-8 x 4 1/2"	Zinc, Galv, Plain
	1-8 x 5"	Zinc, Galv, Plain
	1-8 x 5 1/2"	Zinc, Galv, Plain
	1-8 x 6"	Zinc, Galv, Plain
	1-8 x 6 1/2"	Zinc, Galv, Plain
	1-8 x 7"	Zinc, Galv, Plain
	1-8 x 7 1/2"	Zinc, Plain
	1-8 x 8"	Zinc, Galv, Plain
	1-8 x 8 1/2"	Zinc, Galv, Plain
	1-8 x 9"	Zinc, Galv, Plain
	1-8 x 9 1/2"	Zinc, Galv, Plain
	1-8 x 10"	Zinc, Galv, Plain
	1-8 x 10 1/2"	Zinc, Plain
	1-8 x 11"	Zinc, Galv, Plain
	1-8 x 12"	Zinc, Galv, Plain

**Longer sizes available. Call for details.**

	1 1/8-7 x 2 1/2"	Plain
	1 1/8-7 x 3"	Zinc, Galv, Plain
	1 1/8-7 x 3 1/2"	Zinc, Galv, Plain
	1 1/8-7 x 4"	Zinc, Galv, Plain
	1 1/8-7 x 4 1/2"	Zinc, Galv, Plain
	1 1/8-7 x 5"	Zinc, Galv, Plain
	1 1/8-7 x 5 1/2"	Zinc, Galv, Plain
	1 1/8-7 x 6"	Zinc, Galv, Plain
	1 1/8-7 x 6 1/2"	Zinc, Plain
	1 1/8-7 x 7"	Zinc, Galv, Plain
	1 1/8-7 x 8"	Zinc, Galv, Plain
	1 1/8-7 x 9"	Galv, Plain
	1 1/8-7 x 10"	Plain
	1 1/8-7 x 11"	Plain
	1 1/8-7 x 12"	Plain

**Longer sizes available. Call for details.**

	1 1/4-7 x 2 1/2"	Plain
--	------------------	-------

MBS#	Description	Finishes available
	1 1/4-7 x 3"	Zinc, Galv, Plain
	1 1/4-7 x 3 1/2"	Zinc, Galv, Plain
	1 1/4-7 x 4"	Zinc, Galv, Plain
	1 1/4-7 x 4 1/2"	Zinc, Galv, Plain
	1 1/4-7 x 5"	Zinc, Galv, Plain
	1 1/4-7 x 5 1/2"	Zinc, Galv, Plain
	1 1/4-7 x 6"	Zinc, Galv, Plain
	1 1/4-7 x 6 1/2"	Zinc, Galv, Plain
	1 1/4-7 x 7"	Zinc, Galv, Plain
	1 1/4-7 x 7 1/2"	Zinc, Plain
	1 1/4-7 x 8"	Zinc, Plain
	1 1/4-7 x 8 1/2"	Zinc, Plain
	1 1/4-7 x 9"	Zinc, Plain
	1 1/4-7 x 9 1/2"	Plain
	1 1/4-7 x 10"	Zinc, Plain
	1 1/4-7 x 11"	Zinc, Plain
	1 1/4-7 x 12"	Zinc, Plain

**Longer sizes available. Call for details.**

	1 1/2-6 x 3"	Zinc, Plain
	1 1/2-6 x 3 1/2"	Zinc, Plain
	1 1/2-6 x 4"	Zinc, Plain
	1 1/2-6 x 4 1/2"	Zinc, Plain
	1 1/2-6 x 5"	Zinc, Plain
	1 1/2-6 x 5 1/2"	Zinc, Plain
	1 1/2-6 x 6"	Zinc, Galv, Plain
	1 1/2-6 x 6 1/2"	Plain
	1 1/2-6 x 7"	Galv, Plain
	1 1/2-6 x 7 1/2"	Plain
	1 1/2-6 x 8"	Zinc, Plain
	1 1/2-6 x 9"	Plain
	1 1/2-6 x 10"	Zinc, Plain
	1 1/2-6 x 11"	Plain
	1 1/2-6 x 12"	Plain

**Longer sizes available. Call for details.**

	1 3/4-5 x 4 1/2"	Plain
	1 3/4-5 x 5"	Plain
	1 3/4-5 x 5 1/2"	Plain
	1 3/4-5 x 6"	Plain
	1 3/4-5 x 6 1/2"	Plain
	1 3/4-5 x 7"	Plain
	1 3/4-5 x 8"	Plain
	2-4 1/2 x 6"	Plain
	2-4 1/2 x 7"	Plain
	2-4 1/2 x 8"	Plain

***MBS. Your one-stop for all your tool and fastener needs!***



**ATLAS FASTENER**  
**Carriage Bolt**  
**Grade 2 (A307)**  
**Button Head**



- Standard Thread pitch
- Zinc and Galvanized finishes available

MBS#	Description	Finishes available
<b>Button Head Grade 2 (A307)</b>		
	3/16-24 x 1/2"	Zinc
	3/16-24 x 3/4"	Zinc
	3/16-24 x 1"	Zinc
	3/16-24 x 1 1/4"	Zinc
	3/16-24 x 1 1/2"	Zinc
	3/16-24 x 1 3/4"	Zinc
	3/16-24 x 2"	Zinc
	3/16-24 x 2 1/2"	Zinc
	3/16-24 x 3"	Zinc
	3/16-24 x 3 1/2"	Zinc
	1/4-20 x 1/2"	Zinc
	1/4-20 x 5/8"	Zinc
	1/4-20 x 3/4"	Zinc
	1/4-20 x 1"	Zinc, Galv
	1/4-20 x 1 1/4"	Zinc, Galv
	1/4-20 x 1 1/2"	Zinc, Galv
	1/4-20 x 1 13/4"	Zinc
	1/4-20 x 2"	Zinc, Galv
	1/4-20 x 2 1/4"	Zinc
	1/4-20 x 2 1/2"	Zinc, Galv
	1/4-20 x 2 3/4"	Zinc
	1/4-20 x 3"	Zinc, Galv
	1/4-20 x 3 1/4"	Zinc
	1/4-20 x 3 1/2"	Zinc, Galv
	1/4-20 x 4"	Zinc, Galv
	1/4-20 x 4 1/2"	Zinc, Galv
	1/4-20 x 5"	Zinc, Galv
	1/4-20 x 5 1/2"	Zinc, Galv
	1/4-20 x 6"	Zinc, Galv
	1/4-20 x 6 1/2"	Zinc
	1/4-20 x 7"	Zinc
	1/4-20 x 7 1/2"	Zinc
	1/4-20 x 8"	Zinc
	5/16-18 x 3/4"	Zinc
	5/16-18 x 1"	Zinc, Galv
	5/16-18 x 1 1/4"	Zinc, Galv
	5/16-18 x 1 1/2"	Zinc, Galv
	5/16-18 x 1 3/4"	Zinc
	5/16-18 x 2"	Zinc, Galv
	5/16-18 x 2 1/4"	Zinc
	5/16-18 x 2 1/2"	Zinc, Galv
	5/16-18 x 2 3/4"	Zinc
	5/16-18 x 3"	Zinc, Galv
	5/16-18 x 3 1/4"	Zinc
	5/16-18 x 3 1/2"	Zinc, Galv
	5/16-18 x 4"	Zinc, Galv
	5/16-18 x 4 1/2"	Zinc, Galv

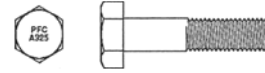
MBS#	Description	Finishes available
	5/16-18 x 5"	Zinc, Galv
	5/16-18 x 5 1/2"	Zinc, Galv
	5/16-18 x 6"	Zinc, Galv
	5/16-18 x 6 1/2"	Zinc
	5/16-18 x 7"	Zinc, Galv
	5/16-18 x 7 1/2"	Zinc
	5/16-18 x 8"	Zinc, Galv
	5/16-18 x 9"	Zinc
	5/16-18 x 10"	Zinc
	3/8-16 x 3/4"	Zinc
	3/8-16 x 1"	Zinc, Galv
	3/8-16 x 1 1/4"	Zinc, Galv
	3/8-16 x 1 1/2"	Zinc, Galv
	3/8-16 x 1 3/4"	Zinc
	3/8-16 x 2"	Zinc, Galv
	3/8-16 x 2 1/4"	Zinc
	3/8-16 x 2 1/2"	Zinc, Galv
	3/8-16 x 2 3/4"	Zinc
	3/8-16 x 3"	Zinc, Galv
	3/8-16 x 3 1/4"	Zinc
	3/8-16 x 3 1/2"	Zinc, Galv
	3/8-16 x 4"	Zinc, Galv
	3/8-16 x 4 1/2"	Zinc, Galv
	3/8-16 x 5"	Zinc, Galv
	3/8-16 x 5 1/2"	Zinc, Galv
	3/8-16 x 6"	Zinc, Galv
	3/8-16 x 6 1/2"	Zinc
	3/8-16 x 7"	Zinc, Galv
	3/8-16 x 7 1/2"	Zinc
	3/8-16 x 8"	Zinc, Galv
	3/8-16 x 8 1/2"	Zinc
	3/8-16 x 9"	Zinc, Galv
	3/8-16 x 9 1/2"	Zinc
	3/8-16 x 10"	Zinc, Galv
	3/8-16 x 11"	Zinc, Galv
	3/8-16 x 12"	Zinc, Galv
	7/16-14 x 1"	Zinc
	7/16-14 x 1 1/4"	Zinc
	7/16-14 x 1 1/2"	Zinc
	7/16-14 x 2"	Zinc
	7/16-14 x 2 1/2"	Zinc
	7/16-14 x 3"	Zinc
	7/16-14 x 3 1/2"	Zinc
	7/16-14 x 4"	Zinc
	7/16-14 x 4 1/2"	Zinc
	7/16-14 x 5"	Zinc
	7/16-14 x 5 1/2"	Zinc
	7/16-14 x 6"	Zinc
	1/2-13 x 1"	Zinc
	1/2-13 x 1 1/4"	Zinc
	1/2-13 x 1 1/2"	Zinc, Galv
	1/2-13 x 1 3/4"	Zinc, Galv
	1/2-13 x 2"	Zinc, Galv
	1/2-13 x 2 1/4"	Zinc
	1/2-13 x 2 1/2"	Zinc, Galv
	1/2-13 x 2 3/4"	Zinc
	1/2-13 x 3"	Zinc, Galv
	1/2-13 x 3 1/2"	Zinc, Galv
	1/2-13 x 4"	Zinc, Galv



MBS#	Description	Finishes available
	1/2-13 x 4 1/2"	Zinc, Galv
	1/2-13 x 5"	Zinc, Galv
	1/2-13 x 5 1/2"	Zinc, Galv
	1/2-13 x 6"	Zinc, Galv
	1/2-13 x 6 1/2"	Zinc
	1/2-13 x 7"	Zinc, Galv
	1/2-13 x 7 1/2"	Zinc
	1/2-13 x 8"	Zinc, Galv
	1/2-13 x 8 1/2"	Zinc
	1/2-13 x 9"	Zinc, Galv
	1/2-13 x 9 1/2"	Zinc
	1/2-13 x 10"	Zinc, Galv
	1/2-13 x 11"	Zinc
	1/2-13 x 12"	Zinc, Galv
<b>Longer Sizes available. Call for availability.</b>		
	5/8-11 x 1 1/2"	Zinc
	5/8-11 x 2"	Zinc, Galv
	5/8-11 x 2 1/2"	Zinc, Galv
	5/8-11 x 3"	Zinc, Galv
	5/8-11 x 3 1/2"	Zinc, Galv
	5/8-11 x 4"	Zinc, Galv
	5/8-11 x 4 1/2"	Zinc, Galv
	5/8-11 x 5"	Zinc, Galv
	5/8-11 x 5 1/2"	Zinc
	5/8-11 x 6"	Zinc, Galv
	5/8-11 x 6 1/2"	Zinc
	5/8-11 x 7"	Zinc, Galv
	5/8-11 x 7 1/2"	Zinc
	5/8-11 x 8"	Zinc, Galv
	5/8-11 x 9"	Zinc, Galv
	5/8-11 x 10"	Zinc, Galv
	5/8-11 x 11"	Zinc
	5/8-11 x 12"	Zinc, Galv
<b>Longer sizes available. Call for availability.</b>		
	3/4-10 x 2"	Zinc
	3/4-10 x 2 1/2"	Zinc
	3/4-10 x 3"	Zinc
	3/4-10 x 3 1/2"	Zinc
	3/4-10 x 4"	Zinc
	3/4-10 x 4 1/2"	Zinc
	3/4-10 x 5"	Zinc
	3/4-10 x 5 1/2"	Zinc
	3/4-10 x 6"	Zinc
	3/4-10 x 6 1/2"	Zinc
	3/4-10 x 7"	Zinc
	3/4-10 x 7 1/2"	Zinc
	3/4-10 x 8"	Zinc
	3/4-10 x 9"	Zinc
	3/4-10 x 10"	Zinc
	3/4-10 x 11"	Zinc
	3/4-10 x 12"	Zinc

PORTEOUS FASTENER COMPANY

**Structural Bolts**  
**A325, No Nut**



MBS#	Size	Bulk Qty	Full Pallet	Keg Qty	Full Pallet
<b>Plain Finish</b>					
2816-020	1/2"-13 x 1"	600	10,800	-	-
2818-020	1/2"-13 x 1 1/4"	550	9,900	-	-
2818-000	1/2"-13 x 1 1/4"	-	-	1,800	16,200
2820-020	1/2"-13 x 1 1/2"	475	8,550	-	-
2820-000	1/2"-13 x 1 1/2"	-	-	1,600	14,400
2822-020	1/2"-13 x 1 3/4"	450	8,100	-	-
2822-000	1/2"-13 x 1 3/4"	-	-	1,500	13,500
2824-020	1/2"-13 x 2"	400	7,200	-	-
2824-000	1/2"-13 x 2"	-	-	1,300	11,700
2825-020	1/2"-13 x 2 1/4"	350	6,300	-	-
2825-000	1/2"-13 x 2 1/4"	-	-	1,200	10,800
2826-020	1/2"-13 x 2 1/2"	325	5,850	-	-
2826-000	1/2"-13 x 2 1/2"	-	-	1,100	9,900
2830-020	1/2"-13 x 3"	275	4,950	-	-
2830-000	1/2"-13 x 3"	-	-	1,000	9,000
2831-020	1/2"-13 x 3 1/4"	275	4,950	-	-
2831-000	1/2"-13 x 3 1/4"	-	-	900	8,100
2832-020	1/2"-13 x 3 1/2"	250	4,500	-	-
2832-000	1/2"-13 x 3 1/2"	-	-	850	7,650
2833-020	1/2"-13 x 3 3/4"	225	4,050	-	-
2840-020	1/2"-13 x 4"	225	4,050	-	-
2840-000	1/2"-13 x 4"	-	-	600	5,400
2842-020	1/2"-13 x 4 1/2"	200	3,600	-	-
2850-020	1/2"-13 x 5"	175	3,150	-	-
2850-000	1/2"-13 x 5"	-	-	600	5,400
2852-020	1/2"-13 x 5 1/2"	175	3,150	-	-
2860-020	1/2"-13 x 6"	150	2,700	-	-
2861-020	1/2"-13 x 6 1/2"	150	2,700	-	-
2862-020	1/2"-13 x 7"	130	2,340	-	-
2863-020	1/2"-13 x 7 1/2"	125	2,250	-	-
2864-020	1/2"-13 x 8"	120	2,160	-	-
3020-020	5/8"-11 x 1 1/2"	275	4,950	-	-
3020-000	5/8"-11 x 1 1/2"	-	-	1,000	9,000
3022-020	5/8"-11 x 1 3/4"	270	4,860	-	-
3022-000	5/8"-11 x 1 3/4"	-	-	900	8,100
3024-020	5/8"-11 x 2"	130	2,340	-	-
3024-000	5/8"-11 x 2"	-	-	850	7,650
3025-020	5/8"-11 x 2 1/4"	125	2,250	-	-
3025-000	5/8"-11 x 2 1/4"	-	-	750	6,750
3026-020	5/8"-11 x 2 1/2"	200	3,600	-	-
3026-000	5/8"-11 x 2 1/2"	-	-	700	6,300
3027-020	5/8"-11 x 2 3/4"	175	3,150	-	-
3027-000	5/8"-11 x 2 3/4"	-	-	650	5,850
3030-020	5/8"-11 x 3"	175	3,150	-	-

**When only the best will do,  
 Call MBS Tool and Fastener**



MBS#	Size	Bulk Qty	Full Pallet	Keg Qty	Full Pallet	MBS#	Size	Bulk Qty	Full Pallet	Keg Qty	Full Pallet
3030-000	5/8"-11 x 3"	-	-	600	5,400	3261-020	3/4"-10 x 6 1/2"	65	1,170	-	-
3031-020	5/8"-11 x 3 1/4"	150	2,700	-	-	3261-000	3/4"-10 x 6 1/2"	-	-	210	1,890
3031-000	5/8"-11 x 3 1/4"	-	-	550	4,950	3262-020	3/4"-10 x 7"	60	1,080	-	-
3032-020	5/8"-11 x 3 1/2"	150	2,700	-	-	3262-000	3/4"-10 x 7"	-	-	200	1,800
3032-000	5/8"-11 x 3 1/2"	-	-	500	4,500	3263-020	3/4"-10 x 7 1/2"	55	990	-	-
3033-020	5/8"-11 x 3 3/4"	150	2,700	-	-	3263-000	3/4"-10 x 7 1/2"	-	-	190	1,710
3040-020	5/8"-11 x 4"	140	2,520	-	-	3264-020	3/4"-10 x 8"	50	900	-	-
3040-000	5/8"-11 x 4"	-	-	500	4,500	3264-000	3/4"-10 x 8"	-	-	180	1,620
3041-020	5/8"-11 x 4 1/4"	130	2,340	-	-	3265-020	3/4"-10 x 8 1/2"	50	900	-	-
3042-020	5/8"-11 x 4 1/2"	125	2,250	-	-	3265-000	3/4"-10 x 8 1/2"	-	-	160	1,440
3042-000	5/8"-11 x 4 1/2"	-	-	400	3,600	3266-020	3/4"-10 x 9"	50	900	-	-
3043-020	5/8"-11 x 4 3/4"	125	2,250	-	-	3266-000	3/4"-10 x 9"	-	-	150	1,350
3050-020	5/8"-11 x 5"	115	2,070	-	-	3267-020	3/4"-10 x 9 1/2"	45	810	-	-
3052-020	5/8"-11 x 5 1/2"	110	1,980	-	-	3268-020	3/4"-10 x 10"	45	810	-	-
3060-020	5/8"-11 x 6"	100	1,800	-	-	3268-000	3/4"-10 x 10"	-	-	140	1,260
3060-000	5/8"-11 x 6"	-	-	325	2,925	3272-020	3/4"-10 x 12"	35	630	-	-
3061-020	5/8"-11 x 6 1/2"	95	1,710	-	-	3272-000	3/4"-10 x 12"	-	-	120	1,080
3062-020	5/8"-11 x 7"	90	1,620	-	-	3422-020	7/8"-9 x 1 3/4"	115	2,070	-	-
3063-020	5/8"-11 x 7 1/2"	80	1,440	-	-	3424-020	7/8"-9 x 9"	110	1,980	-	-
3064-020	5/8"-11 x 8"	80	1,440	-	-	3424-000	7/8"-9 x 9"	-	-	360	3,240
3220-020	3/4"-10 x 1 1/2"	175	3,150	-	-	3425-020	7/8"-9 x 2 1/4"	100	1,800	-	-
3220-000	3/4"-10 x 1 1/2"	-	-	650	5,850	3425-000	7/8"-9 x 2 1/4"	-	-	350	3,150
3222-020	3/4"-10 x 1 3/4"	175	3,150	-	-	3426-020	7/8"-9 x 2 1/2"	95	1,710	-	-
3222-000	3/4"-10 x 1 3/4"	-	-	600	5,400	3426-000	7/8"-9 x 2 1/2"	-	-	330	2,970
3224-020	3/4"-10 x 2"	150	2,700	-	-	3427-020	7/8"-9 x 2 3/4"	90	1,620	-	-
3224-000	3/4"-10 x 2"	-	-	550	4,950	3427-000	7/8"-9 x 2 3/4"	-	-	310	2,790
3225-020	3/4"-10 x 2 1/4"	150	2,700	-	-	3430-020	7/8"-9 x 3"	85	1,530	-	-
3225-000	3/4"-10 x 2 1/4"	-	-	500	4,500	3430-000	7/8"-9 x 3"	-	-	300	2,700
3226-020	3/4"-10 x 2 1/2"	125	2,250	-	-	3431-020	7/8"-9 x 3 1/4"	80	1,440	-	-
3226-000	3/4"-10 x 2 1/2"	-	-	450	4,050	3431-000	7/8"-9 x 3 1/4"	-	-	280	2,520
3227-020	3/4"-10 x 2 3/4"	125	2,250	-	-	3432-020	7/8"-9 x 3 1/2"	75	1,350	-	-
3227-000	3/4"-10 x 2 3/4"	-	-	420	3,780	3432-000	7/8"-9 x 3 1/2"	-	-	270	2,430
3230-020	3/4"-10 x 3"	120	2,160	-	-	3433-020	7/8"-9 x 3 3/4"	70	1,260	-	-
3230-000	3/4"-10 x 3"	-	-	400	3,600	3433-000	7/8"-9 x 3 3/4"	-	-	250	2,250
3231-020	3/4"-10 x 3 1/4"	110	1,980	-	-	3440-020	7/8"-9 x 4"	65	1,170	-	-
3231-000	3/4"-10 x 3 1/4"	-	-	380	3,420	3440-000	7/8"-9 x 4"	-	-	240	2,160
3232-020	3/4"-10 x [3[1/2]]"	100	1,800	-	-	3441-020	7/8"-9 x 4 1/4"	65	1,170	-	-
3232-000	3/4"-10 x [3[1/2]]"	-	-	350	3,150	3442-020	7/8"-9 x 4 1/2"	60	1,080	-	-
3233-020	3/4"-10 x 3 3/4"	100	1,800	-	-	3442-000	7/8"-9 x 4 1/2"	-	-	200	1,800
3233-000	3/4"-10 x 3 3/4"	-	-	350	3,150	3443-020	7/8"-9 x 4 3/4"	60	1,080	-	-
3240-020	3/4"-10 x 4"	95	1,710	-	-	3450-020	7/8"-9 x 5"	55	990	-	-
3240-000	3/4"-10 x 4"	-	-	320	2,880	3450-000	7/8"-9 x 5"	-	-	180	1,620
3241-020	3/4"-10 x 4 1/2"	90	1,620	-	-	3452-020	7/8"-9 x 5 1/2"	50	900	-	-
3242-020	3/4"-10 x 4 1/2"	85	1,530	-	-	3452-000	7/8"-9 x 5 1/2"	-	-	175	1,575
3242-000	3/4"-10 x 4 1/2"	-	-	300	2,700	3460-020	7/8"-9 x 6"	50	900	-	-
3243-020	3/4"-10 x 4 3/4"	80	1,440	-	-	3460-000	7/8"-9 x 6"	-	-	160	1,440
3250-020	3/4"-10 x 5"	80	1,440	-	-	3461-020	7/8"-9 x 6 1/2"	45	810	-	-
3250-000	3/4"-10 x 5"	-	-	250	2,250	3462-020	7/8"-9 x 7"	40	720	-	-
3252-020	3/4"-10 x 5 1/2"	75	1,350	-	-	3463-020	7/8"-9 x 7 1/2"	40	720	-	-
3252-000	3/4"-10 x 5 1/2"	-	-	250	2,250	3464-020	7/8"-9 x 8"	40	720	-	-
3260-020	3/4"-10 x 6"	70	1,260	-	-	3465-020	7/8"-9 x 8 1/2"	35	630	-	-
3260-000	3/4"-10 x 6"	-	-	240	2,160	3466-020	7/8"-9 x 9"	35	630	-	-



MBS#	Size	Bulk Qty	Full Pallet	Keg Qty	Full Pallet	MBS#	Size	Bulk Qty	Full Pallet	Keg Qty	Full Pallet
3468-020	7/8"-9 x 10"	30	540	-	-	4141-020	1 1/8"-7 x 4 1/4"	35	630	-	-
4024-020	1"-1 x 2"	80	1,440	-	-	4140-000	1 1/8"-7 x 4 1/4"	-	-	120	1,080
4024-000	1"-1 x 2"	-	-	280	2,520	4142-020	1 1/8"-7 x 4 1/2"	35	630	-	-
4025-020	1"-1 x 2 1/4"	75	1,350	-	-	4142-00	1 1/8"-7 x 4 1/2"	-	-	105	945
4025-000	1"-1 x 2 1/4"	-	-	260	2,340	4143-020	1 1/8"-7 x 4 3/4"	30	540	-	-
4026-020	1"-1 x 2 1/2"	70	1,260	-	-	4150-020	1 1/8"-7 x 5"	30	540	-	-
4026-000	1"-1 x 2 1/2"	-	-	250	2,250	4150-000	1 1/8"-7 x 5"	-	-	100	900
4027-020	1"-1 x 2 3/4"	65	1,170	-	-	4152-020	1 1/8"-7 x 5 1/2"	30	540	-	-
4027-000	1"-1 x 2 3/4"	-	-	230	2,070	4152-000	1 1/8"-7 x 5 1/2"	-	-	100	900
4030-020	1"-1 x 3"	60	1,080	-	-	4160-020	1 1/8"-7 x 6"	25	450	-	-
4030-000	1"-1 x 3"	-	-	220	1,980	4160-000	1 1/8"-7 x 6"	-	-	90	810
4031-020	1"-1 x 3 1/4"	60	1,080	-	-	4161-020	1 1/8"-7 x 6 1/2"	25	450	-	-
4031-000	1"-1 x 3 1/4"	-	-	210	1,890	4161-000	1 1/8"-7 x 6 1/2"	-	-	85	765
4032-020	1"-1 x 3 1/2"	55	990	-	-	4162-020	1 1/8"-7 x 7"	25	450	-	-
4032-000	1"-1 x 3 1/2"	-	-	200	1,800	4162-000	1 1/8"-7 x 7"	-	-	80	720
4033-020	1"-1 x 3 3/4"	55	990	-	-	4226-020	1 1/4"-7 x 2 1/2"	40	720	-	-
4033-000	1"-1 x 3 3/4"	-	-	190	1,710	4226-000	1 1/4"-7 x 2 1/2"	-	-	120	1,080
4040-020	1"-1 x 4"	50	900	-	-	4227-020	1 1/4"-7 x 2 3/4"	40	720	-	-
4040-000	1"-1 x 4"	-	-	180	1,620	4227-000	1 1/4"-7 x 2 3/4"	-	-	110	990
4041-020	1"-1 x 4 1/4"	50	900	-	-	4230-020	1 1/4"-7 x 3"	35	630	-	-
4041-000	1"-1 x 4 1/4"	-	-	160	1,440	4230-000	1 1/4"-7 x 3"	-	-	100	900
4042-020	1"-1 x 4 1/2"	45	810	-	-	4231-020	1 1/4"-7 x 6 1/2"	35	630	-	-
4042-000	1"-1 x 4 1/2"	-	-	160	1,440	4231-000	1 1/4"-7 x 6 1/2"	-	-	100	900
4043-020	1"-1 x 4 3/4"	45	810	-	-	4232-020	1 1/4"-7 x 3 1/2"	35	630	-	-
4043-000	1"-1 x 4 3/4"	-	-	140	1,260	4232-000	1 1/4"-7 x 3 1/2"	-	-	95	855
4050-020	1"-1 x 5"	40	720	-	-	4233-020	1 1/4"-7 x 3 3/4"	30	540	-	-
4050-000	1"-1 x 5"	-	-	130	1,170	4233-000	1 1/4"-7 x 3 3/4"	-	-	90	810
4052-020	1"-1 x 5 1/2"	40	720	-	-	4240-020	1 1/4"-7 x 4"	30	540	-	-
4052-000	1"-1 x 5 1/2"	-	-	130	1,170	4240-000	1 1/4"-7 x 4"	-	-	90	810
4060-020	1"-1 x 6"	35	630	-	-	4241-020	1 1/4"-7 x 4 1/4"	30	540	-	-
4060-000	1"-1 x 6"	-	-	120	1,080	4242-020	1 1/4"-7 x 4 1/2"	25	450	-	-
4061-020	1"-1 x 6 1/2"	35	630	-	-	4242-000	1 1/4"-7 x 4 1/2"	-	-	80	720
4061-000	1"-1 x 6 1/2"	-	-	120	1,080	4243-020	1 1/4"-7 x 4 3/4"	25	450	-	-
4062-020	1"-1 x 7"	30	540	-	-	4243-000	1 1/4"-7 x 4 3/4"	-	-	80	720
4062-000	1"-1 x 7"	-	-	110	990	4250-020	1 1/4"-7 x 5"	25	450	-	-
4063-020	1"-1 x 7 1/2"	30	540	-	-	4250-000	1 1/4"-7 x 5"	-	-	75	675
4064-020	1"-1 x 8"	30	540	-	-	4252-020	1 1/4"-7 x 5 1/2"	25	450	-	-
4064-000	1"-1 x 8"	-	-	100	900	4252-000	1 1/4"-7 x 5 1/2"	-	-	70	630
4065-020	1"-1 x 8 1/2"	25	450	-	-	4260-020	1 1/4"-7 x 6"	20	360	-	-
4066-020	1"-1 x 9"	25	450	-	-	4260-000	1 1/4"-7 x 6"	-	-	65	585
4068-020	1"-1 x 10"	25	450	-	-	4261-020	1 1/4"-7 x 6 1/2"	20	360	-	-
4126-020	1 1/8"-7 x 2 1/2"	50	900	-	-	4261-000	1 1/4"-7 x 6 1/2"	-	-	60	540
4127-020	1 1/8"-7 x 2 3/4"	45	810	-	-	4262-020	1 1/4"-7 x 7"	20	360	-	-
4127-000	1 1/8"-7 x 2 3/4"	-	-	160	1,440	4262-000	1 1/4"-7 x 7"	-	-	55	495
4130-020	1 1/8"-7 x 3"	45	810	-	-	4263-020	1 1/4"-7 x 7 1/2"	20	360	-	-
4130-000	1 1/8"-7 x 3"	-	-	150	1,350	4264-020	1 1/4"-7 x 8"	18	324	-	-
4131-020	1 1/8"-7 x 3 1/4"	40	720	-	-	4430-020	1 1/2"-6 x 3"	25	450	-	-
4131-000	1 1/8"-7 x 3 1/4"	-	-	140	1,260	4430-000	1 1/2"-6 x 3"	-	-	70	630
4132-020	1 1/8"-7 x 3 1/2"	40	720	-	-	4432-020	1 1/2"-6 x 3 1/2"	20	360	-	-
4132-000	1 1/8"-7 x 3 1/2"	-	-	130	1,170	4432-000	1 1/2"-6 x 3 1/2"	-	-	65	585
4140-020	1 1/8"-7 x 4"	35	630	-	-	4440-020	1 1/2"-6 x 4"	20	360	-	-
4140-000	1 1/8"-7 x 4"	-	-	125	1,125	4440-000	1 1/2"-6 x 4"	-	-	60	540



MBS#	Size	Bulk Qty	Full Pallet	Keg Qty	Full Pallet	MBS#	Size	Bulk Qty	Full Pallet	Keg Qty	Full Pallet
4441-020	1½"-6 x 4¼"	20	360	-	-	3231-024	¾"-10 x 3¼"	110	1,980	-	-
4441-000	1½"-6 x 4¼"	-	-	55	495	3231-004	¾"-10 x 3¼"	-	-	380	3,420
4442-020	1½"-6 x 4½"	20	360	-	-	3232-024	¾"-10 x 3½"	100	1,800	-	-
4442-000	1½"-6 x 4½"	-	-	55	495	3232-004	¾"-10 x 3½"	-	-	350	3,150
4443-020	1½"-6 x 4¾"	18	324	-	-	3233-024	¾"-10 x 3¾"	100	1,800	-	-
4443-000	1½"-6 x 4¾"	-	-	50	450	3233-004	¾"-10 x 3¾"	-	-	350	3,150
<b>Hot Dip Galvanized Finish</b>						3240-024	¾"-10 x 4"	95	1,170	-	-
2818-024	½"-13 x 1¼"	550	9,900	-	-	3240-004	¾"-10 x 4"	-	-	320	2,880
2818-004	½"-13 x 1¼"	-	-	1,800	16,200	3242-024	¾"-10 x 4½"	85	1,530	-	-
2820-024	½"-13 x 1½"	475	8,550	-	-	3250-024	¾"-10 x 5"	80	1,440	-	-
2820-004	½"-13 x 1½"	-	-	1,600	14,400	3260-024	¾"-10 x 6"	70	1,260	-	-
2822-024	½"-13 x 1¾"	450	8,100	-	-	3260-004	¾"-10 x 6"	-	-	240	2,160
2822-004	½"-13 x 1¾"	-	-	1,500	13,500	3261-024	¾"-10 x 6½"	65	1,170	-	-
2824-024	½"-13 x 2"	400	7,200	-	-	3262-024	¾"-10 x 7"	50	1,080	-	-
2824-004	½"-13 x 2"	-	-	1,300	11,700	3264-024	¾"-10 x 8"	50	900	-	-
2825-024	½"-13 x 2¼"	350	6,300	-	-	3425-024	⅞"-9 x 2¼"	100	1,800	-	-
2826-024	½"-13 x 2½"	325	5,850	-	-	3425-004	⅞"-9 x 2¼"	-	-	350	3,150
2827-024	½"-13 x 2¾"	300	5,400	-	-	3426-024	⅞"-9 x 2½"	95	1,710	-	-
2832-024	½"-13 x 3½"	250	4,500	-	-	3426-004	⅞"-9 x 2½"	-	-	330	2,970
2840-024	½"-13 x 4"	225	4,050	-	-	3427-024	⅞"-9 x 2¾"	90	1,620	-	-
2850-024	½"-13 x 5"	175	3,150	-	-	3427-004	⅞"-9 x 2¾"	-	-	310	2,790
3020-024	⅝"-11 x 1½"	275	4,950	-	-	3430-024	⅞"-9 x 3"	85	1,530	-	-
3020-004	⅝"-11 x 1½"	-	-	1,000	9,000	3430-004	⅞"-9 x 3"	-	-	300	2,700
3022-024	⅝"-11 x 1¾"	270	4,860	-	-	3431-024	⅞"-9 x 3¼"	80	1,440	-	-
3022-004	⅝"-11 x 1¾"	-	-	900	8,100	3432-024	⅞"-9 x 3½"	75	1,350	-	-
3024-024	⅝"-11 x 2"	225	4,050	-	-	3432-004	⅞"-9 x 3½"	-	-	270	2,430
3024-004	⅝"-11 x 2"	-	-	850	7,650	3433-024	⅞"-9 x 3¾"	70	1,260	-	-
3025-024	⅝"-11 x 2¼"	225	4,050	-	-	3440-024	⅞"-9 x 4"	65	1,170	-	-
3025-004	⅝"-11 x 2¼"	-	-	750	6,750	3440-004	⅞"-9 x 4"	-	-	240	2,160
3026-024	⅝"-11 x 2½"	220	3,600	-	-	3450-024	⅞"-9 x 5"	55	990	-	-
3026-004	⅝"-11 x 2½"	-	-	700	6,300	4025-024	1"-1 x 2¼"	75	1,350	-	-
3027-024	⅝"-11 x 2¾"	175	3,150	-	-	4025-004	1"-1 x 2¼"	-	-	260	2,340
3030-024	⅝"-11 x 3"	175	3,150	-	-	4026-024	1"-1 x 2½"	70	1,260	-	-
3030-004	⅝"-11 x 3"	-	-	600	5,400	4026-004	1"-1 x 2½"	-	-	250	2,250
3031-024	⅝"-11 x 3¼"	150	2,700	-	-	4027-024	1"-1 x 2¾"	65	1,170	-	-
3032-024	⅝"-11 x 3½"	150	2,700	-	-	4027-004	1"-1 x 2¾"	-	-	230	2,070
3040-024	⅝"-11 x 4"	140	2,520	-	-	4030-024	1"-1 x 3"	60	1,080	-	-
3042-024	⅝"-11 x 4½"	125	2,250	-	-	4030-004	1"-1 x 3"	-	-	220	1,980
3220-024	¾"-10 x 1½"	175	3,150	-	-	4031-024	1"-1 x 3¼"	60	1,080	-	-
3220-004	¾"-10 x 1½"	-	-	650	5,850	4031-004	1"-1 x 3¼"	-	-	210	1,890
3222-024	¾"-10 x 1¾"	175	3,150	-	-	4032-024	1"-1 x 3½"	55	990	-	-
3222-004	¾"-10 x 1¾"	-	-	600	5,400	4032-004	1"-1 x 3½"	-	-	200	1,800
3224-024	¾"-10 x 2"	150	2,700	-	-	4033-024	1"-1 x 3¾"	55	990	-	-
3224-004	¾"-10 x 2"	-	-	550	4,950	4033-004	1"-1 x 3¾"	-	-	190	1,710
3225-024	¾"-10 x 2¼"	150	2,700	-	-	4040-024	1"-1 x 4"	50	900	-	-
3225-004	¾"-10 x 2¼"	-	-	500	4,500	4040-004	1"-1 x 4"	-	-	180	1,620
3226-024	¾"-10 x 2½"	125	2,250	-	-	4041-024	1"-1 x 4¼"	50	900	-	-
3226-004	¾"-10 x 2½"	-	-	450	4,050	4041-004	1"-1 x 4¼"	-	-	160	1,440
3227-024	¾"-10 x 2¾"	125	2,250	-	-	4042-024	1"-1 x 4½"	45	810	-	-
3227-004	¾"-10 x 2¾"	-	-	420	3,780	4042-004	1"-1 x 4½"	-	-	160	1,440
3230-024	¾"-10 x 3"	120	2,160	-	-	4050-024	1"-1 x 5½"	40	720	-	-
3230-004	¾"-10 x 3"	-	-	400	3,600	4060-024	1"-1 x 6"	35	630	-	-

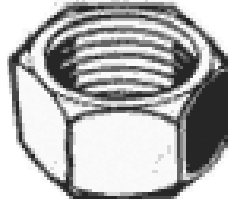


**ATLAS FASTENER**

**Finished Nuts**

**Grade 2 (A307)**

**Plain, Zinc, Galvanized**



- Finished Nuts
- Grade 2 (A307)
- Standard thread pitch
- Multiple Finishes available

MBS#	Description	Finishes available
<b>Finished Hex Nuts</b>		
	1/4"-20	Plain, Zinc, Galv.
	5/16"-18	Plain, Zinc, Galv.
	3/8"-16	Plain, Zinc, Galv.
	7/16"-14	Plain, Zinc, Galv.
	1/2"-13	Plain, Zinc, Galv.
	9/16"-12	Plain, Zinc
	5/8"-11	Plain, Zinc, Galv.
	3/4"-10	Plain, Zinc, Galv., Yellow Zinc
	7/8"-9	Plain, Zinc, Galv.
	1"-8	Plain, Zinc, Galv.
	1 1/8"-7	Plain, Zinc, Galv.
	1 1/4"-7	Plain, Zinc, Galv.
	1 3/8"-6	Plain, Zinc, Galv.
	1 1/2"-6	Plain, Zinc, Galv.
	1 3/4"-5	Plain, Zinc, Galv.
	2"-4 1/2	Plain, Zinc, Galv.
	2 1/4"-4 1/2	Plain
	2 1/2"-4	Plain, Zinc
	2 3/4"-4	Plain
	3"-4	Plain

MBS#	Size	Bulk Qty	Full Pallet	Keg Qty	Full Pallet
4100-020	1 1/8"-8	100	3,600	-	-
4100-000	1 1/8"-8	-	-	350	3,150
4200-020	1 1/4"-8	75	2,700	-	-
4200-000	1 1/4"-8	-	-	270	2,430
4300-020	1 3/8"-8	55	1,980	-	-
4300-000	1 3/8"-8	-	-	200	1,800
4400-020	1 1/2"-8	40	1,440	-	-
4400-000	1 1/2"-8	-	-	150	1,350
4500-020	1 5/8"-8	30	1,080	-	-
4500-000	1 5/8"-8	-	-	120	1,080
4600-020	1 3/4"-8	20	720	-	-
4600-000	1 3/4"-8	-	-	95	855
5000-020	2"-8	15	540	-	-
5000-000	2"-8	-	-	65	585
5200-020	2 1/4"-8	10	360	-	-
5200-000	2 1/4"-8	-	-	48	432
5400-020	2 1/2"-8	10	360	-	-
5400-000	2 1/2"-8	-	-	42	378
5600-000	2 3/4"-8	-	-	25	225
6000-020	3"-8	5	180	-	-
6000-000	3"-8	-	-	20	180

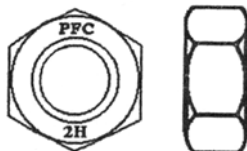
**Hot Dipped Galvanized Finish**

2800-024	1/2"-13	1,000	36,000	-	-
2800-004	1/2"-13	-	-	3,300	29,700
3000-024	5/8"-11	540	19,440	-	-
3000-004	5/8"-11	-	-	1,800	16,000
3200-024	3/4"-10	340	12,240	-	-
3200-004	3/4"-10	-	-	1,000	9,000
3400-024	7/8"-9	220	7,920	-	-
3400-004	7/8"-9	-	-	650	5,850
4000-024	1"-8	150	5,400	-	-
4000-004	1"-8	-	-	500	4,500
4100-024	1 1/8"-8	100	3,600	-	-
4100-004	1 1/8"-8	-	-	350	3,150
4200-024	1 1/4"-8	75	2,700	-	-
4200-004	1 1/4"-8	-	-	270	2,430
4300-004	1 3/8"-8	-	-	200	1,800
4400-024	1 1/2"-8	40	1,440	-	-
4400-004	1 1/2"-8	-	-	150	1,350
5000-024	2"-8	15	540	-	-
5000-004	2"-8	-	-	65	585
5200-004	2 1/4"-8	-	-	48	432

**PORTEOUS FASTENER COMPANY**

**Hex Nuts**

**Grade 2H, Heavy**



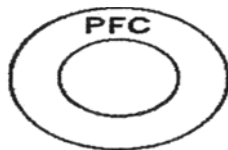
MBS#	Size	Bulk Qty	Full Pallet	Keg Qty	Full Pallet
<b>Plain Finish</b>					
2600-020	3/8"-16	2,000	72,000	-	-
2600-000	3/8"-16	-	-	6,000	54,000
2800-020	1/2"-13	1,000	36,000	-	-
2800-000	1/2"-13	-	-	3,300	29,700
3000-020	5/8"-11	540	19,440	-	-
3000-000	5/8"-11	-	-	1,800	16,200
3200-020	3/4"-10	340	12,240	-	-
3200-000	3/4"-10	-	-	1,000	9,000
3400-020	7/8"-9	220	7,920	-	-
3400-000	7/8"-9	-	-	650	5,850
4000-020	1"-8	150	5,400	-	-
4000-000	1"-8	-	-	500	4,500

**When only the best will do,  
 Call MBS Tool and Fastener**



PORTEOUS FASTENER  
 COMPANY  
**Round Washers**

**Hard  
 F4.36**



MBS#	Size	Box Qty	Case Qty	1/4 Keg Qty	Full Pallet
<b>Plain Finish</b>					
2400-400	1/4"	1,000	9,000	-	-
2400-020	1/4"	-	-	9,000	324,000
2500-400	5/16"	1,000	9,000	-	-
2500-020	5/16"	-	-	8,000	288,000
2600-400	3/8"	600	5,400	-	-
2600-020	3/8"	-	-	6,000	216,000
2700-400	7/16"	600	5,400	-	-
2700-020	7/16"	-	-	4,000	144,000
2800-400	1/2"	300	2,700	-	-
2800-020	1/2"	-	-	1,250	45,000
2900-400	9/16"	300	2,700	-	-
2900-020	9/16"	-	-	2,000	72,000
3000-400	5/8"	200	1,800	-	-
3000-020	5/8"	-	-	1,000	36,000
3200-400	3/4"	150	1,350	-	-
3200-020	3/4"	-	-	1,000	36,000
3400-400	7/8"	100	900	-	-
3400-020	7/8"	-	-	500	18,000
4000-400	1"	50	450	-	-
4000-020	1"	-	-	375	13,500
4100-020	1 1/8"	-	-	350	12,600
4200-020	1 1/4"	-	-	300	10,800
4300-020	1 3/8"	-	-	300	10,800
4400-020	1 1/2"	-	-	200	7,200
4600-020	1 3/4"	-	-	150	5,400
5000-020	2"	-	-	100	3,600
5200-020	2 1/4"	-	-	50	1,800
5400-020	2 1/2"	-	-	50	1,800
6000-020	3"	-	-	50	1,800

**Zinc Yellow Finish**

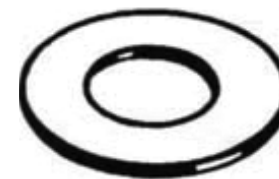
2400-402	1/4"	1,000	9,000	-	-
2400-022	1/4"	-	-	9,000	324,000
2500-402	5/16"	1,000	9,000	-	-
2500-022	5/16"	-	-	8,000	288,000
2600-402	3/8"	600	5,400	-	-
2600-022	3/8"	-	-	6,000	216,000
2700-402	7/16"	600	5,400	-	-
2700-022	7/16"	-	-	4,000	144,000
2800-402	1/2"	300	2,700	-	-
2800-022	1/2"	-	-	1,250	45,000
2900-402	9/16"	300	2,700	-	-
2900-022	9/16"	-	-	2,000	72,000
3000-402	5/8"	200	1,800	-	-
3000-022	5/8"	-	-	1,000	36,000
3200-402	3/4"	150	1,350	-	-
3200-022	3/4"	-	-	1,000	36,000
3400-402	7/8"	100	900	-	-
3400-022	7/8"	-	-	500	18,000
4000-402	1"	50	450	-	-
4000-022	1"	-	-	375	13,500

**Hot Dipped Galvanized Finish**

2800-024	1/2"	-	-	1,250	45,000
3000-024	5/8"	-	-	1,000	36,000
3200-024	3/4"	-	-	1,000	36,000
3400-024	7/8"	-	-	500	18,000
4000-024	1"	-	-	375	13,500

ATLAS FASTENER  
**USS Flat Washers**

- Standard Flat Washers
- Grade 2(a307)
- Used on Standard Bolts
- Multiple Finishes available



**MBS# Description Finishes available**

**USS Flat Washers (Standard)**

3/16" USS	Plain, Zinc
1/4" USS	Plain, Zinc, Galv.
5/16" USS	Plain, Zinc, Galv.
3/8" USS	Plain, Zinc, Galv.
7/16" USS	Plain, Zinc
1/2" USS	Plain, Zinc, Galv.
9/16" USS	Plain, Zinc, Galv.
5/8" USS	Plain, Zinc, Galv.
3/4" USS	Plain, Zinc, Galv.
7/8" USS	Plain, Zinc, Galv.
1" USS	Plain, Zinc, Galv.
1 1/8" USS	Plain, Zinc, Galv.
1 1/4" USS	Plain, Zinc, Galv.
1 3/8" USS	Plain, Zinc, Galv.
1 1/2" USS	Plain, Zinc, Galv.
1 5/8" USS	Plain, Zinc
1 3/4" USS	Plain, Zinc, Galv.
1 7/8" USS	Plain, Zinc
2" USS	Plain, Zinc, Galv.
2 1/4" USS	Plain, Zinc
2 1/2" USS	Plain, Zinc, Galv.
3" USS	Plain, Zinc

**MBS. Your one-stop for all your  
 tool and fastener needs!**



**ATLAS FASTENER**  
**Tension Control Bolts**  
*Mushroom Head*

- Grade A325 & A490 (Structural Bolts)
- Used for structural erecting
- Comes with bolt, nut, and washer



MBS#	Description	Finishes available	Grade
<b>Tension Control Bolts (Structural)</b>			
5/8-11 x 1 1/2"	5/8-11 x 1 1/2"	Plain	A325
5/8-11 x 1 1/2"	5/8-11 x 1 1/2"	Plain	A325
5/8-11 x 2"	5/8-11 x 2"	Plain	A325
5/8-11 x 2 1/4"	5/8-11 x 2 1/4"	Plain	A325
5/8-11 x 2 1/2"	5/8-11 x 2 1/2"	Plain	A325
3/4-10 x 1 3/4"	3/4-10 x 1 3/4"	Plain	A325, A490
3/4-10 x 2"	3/4-10 x 2"	Plain	A325, A490
3/4-10 x 2 1/4"	3/4-10 x 2 1/4"	Plain	A325, A490
3/4-10 x 2 1/2"	3/4-10 x 2 1/2"	Plain	A325, A490
3/4-10 x 2 3/4"	3/4-10 x 2 3/4"	Plain	A325, A490
3/4-10 x 3"	3/4-10 x 3"	Plain	A325, A490
3/4-10 x 3 1/4"	3/4-10 x 3 1/4"	Plain	A325
3/4-10 x 3 1/2"	3/4-10 x 3 1/2"	Plain	A325
3/4-10 x 3 3/4"	3/4-10 x 3 3/4"	Plain	A325
3/4-10 x 4"	3/4-10 x 4"	Plain	A325
7/8-9 x 2"	7/8-9 x 2"	Plain	A325, A490
7/8-9 x 2 1/4"	7/8-9 x 2 1/4"	Plain	A325, A490
7/8-9 x 2 1/2"	7/8-9 x 2 1/2"	Plain	A325, A490
7/8-9 x 2 3/4"	7/8-9 x 2 3/4"	Plain	A325, A490
7/8-9 x 3"	7/8-9 x 3"	Plain	A325, A490
7/8-9 x 3 1/4"	7/8-9 x 3 1/4"	Plain	A325
7/8-9 x 3 1/2"	7/8-9 x 3 1/2"	Plain	A325
7/8-9 x 3 3/4"	7/8-9 x 3 3/4"	Plain	A325
7/8-9 x 4"	7/8-9 x 4"	Plain	A325
1-8 x 2"	1-8 x 2"	Plain	A325, A490
1-8 x 2 1/4"	1-8 x 2 1/4"	Plain	A325, A490
1-8 x 2 1/2"	1-8 x 2 1/2"	Plain	A325, A490
1-8 x 2 3/4"	1-8 x 2 3/4"	Plain	A325, A490
1-8 x 3"	1-8 x 3"	Plain	A325, A490
1-8 x 3"	1-8 x 3"	Plain	A325, A490
1-8 x 3 1/2"	1-8 x 3 1/2"	Plain	A325, A490
1-8 x 3 3/4"	1-8 x 3 3/4"	Plain	A325, A490
1-8 x 4"	1-8 x 4"	Plain	A325, A490
1-8 x 4"	1-8 x 4"	Plain	A325, A490
1-8 x 4 1/2"	1-8 x 4 1/2"	Plain	A325, A490
1 1/8-7 x 2 3/4"	1 1/8-7 x 2 3/4"	Plain	A325, A490
1 1/8-7 x 3"	1 1/8-7 x 3"	Plain	A325, A490
1 1/8-7 x 3 1/4"	1 1/8-7 x 3 1/4"	Plain	A325, A490
1 1/8-7 x 3 1/2"	1 1/8-7 x 3 1/2"	Plain	A325, A490

*If another finish is desired call for availability*

**ATLAS FASTENER**  
**Hex Bolt Assembly**  
**Bolts**

- Grade A325 and A490 Hex Assembly
- Comes with bolt, nut and washer
- Structural Bolts for erecting



MBS#	Description
<b>Hex Bolt Assembly (Structural)</b>	
Call To Order	

**ATLAS FASTENER**  
**Fender Washers**

- Grade 2 (A307)
- Wider than USS Washers
- Multiple Finishes Available

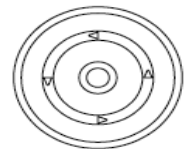


MBS#	Description	Finishes available
<b>Fender Washers (Grade 2-A307)</b>		
	1/8 x 9/16" OD	Zinc
	1/8 x 1" OD	Zinc
	3/16 x 1" OD	Zinc
	3/16 x 1 1/4" OD	Plain, Zinc
	1/4 x 1" OD	Plain, Zinc
	1/4 x 1 1/4" OD	Plain, Zinc
	1/4 x 1 1/2" OD	Plain, Zinc
	1/4 x 2" OD	Zinc
	5/16 x 1 1/4" OD	Plain, Zinc
	5/16 x 1 1/2" OD	Plain, Zinc
	3/8 x 1" OD	Zinc
	3/8 x 1 1/4" OD	Plain, Zinc
	3/8 x 1 1/2" OD	Plain, Zinc
	3/8 x 2" OD	Zinc
	1/2 x 1 1/2" OD	Zinc
	1/2 x 2" OD	Plain, Zinc

*Other Sizes with different thickness available-Call for these*

**ATLAS FASTENER**  
**Insulation Plates**

- Galvalume Steel Plates
- Round and Hex available
- For Insulation using Dekfast screws



MBS#	Description	Pipe Outside Dia.	Thickness
<b>Galvalume Hex Plates</b>			
	2 7/8" Hex Galvalume Plate	2 7/8" OD	.020"
	2 7/8" Hex Plate-Recessed	2 7/8" OD	.020"
<b>Galvalume Round Plates</b>			
	3" Round Galvalume Plate	3" OD	.017"
	3" Round Flat Plate	3" OD	.017"

***We have what you need at a price that can't be beat.***



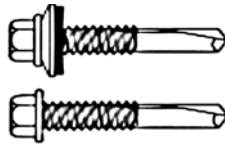
**POWERS FASTENERS  
 Insulation Washer**

- Size: 1-7/16"
- Applications: For attaching exterior foam insulation to all base materials including wood, steel and concrete
- Contractors: Insulation Contractors, Waterproofers, Roofers
- Recommended Pin Sizes: 55080, 55081, 55034, 55035
- 100 per box / 1000 per carton



MBS#
55042

**ATLAS FASTENER  
 T-#5 Self Drilling Screws  
 HWH**

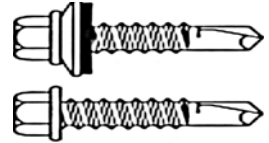


The Type 5 is unique design, combining an extended flute with an advanced thread forming that works well in materials up to (.500) 1/2" thick.

MBS#	Description	Point
<b>HWH Type 5 Self-Driller W/ Bonded Washer</b>		
	#12-24 x 1-1/4"	TCP5
	#12-24 x 1-1/2"	TCP5
	#12-24 x 2"	TCP5
	#12-24 x 3"	TCP5
	#12-24 x 4"	TCP5
	1/4-20 x 4"	TCP5
	1/4-20 x 5"	TCP5
	1/4-20 x 6"	TCP5
	1/4-20 x 8"	TCP5
<b>HWH Type 5 Self-Driller W/O Bonded Washer</b>		
	#12-24 x 1-1/4"	TCP5
	#12-24 x 1-1/2"	TCP5
	#12-24 x 2"	TCP5
	#12-24 x 3"	TCP5
	#12-24 x 4"	TCP5
	1/4-20 x 4"	TCP5
	1/4-20 x 5"	TCP5
	1/4-20 x 6"	TCP5
	1/4-20 x 8"	TCP5

**ATLAS FASTENER  
 HWH Self-Drilling Screw  
 With & W/O Bonded Washer**

- Hex Washer Head
- Steel to Steel application

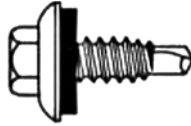


MBS#	Description	Point
<b>HWH Self-Drilling Screw W/ Bonded Washer</b>		
	#10-16 x 1/2"	TCP3
	#10-16 x 3/4"	TCP3
	#10-16 x 1"	TCP3
	#10-16 x 1-1/2"	TCP3
	#12-14 x 3/4"	TCP3
	#12-14 x 1"	TCP3
	#12-14 x 1-1/4"	TCP3
	#12-14 x 1-1/2"	TCP3
	#12-14 x 2"	TCP3
	#12-14 x 2-1/2"	TCP3
	#12-14 x 3"	TCP3
	1/4-14 x 3/4"	TCP3
	1/4-14 x 1"	TCP3
	1/4-14 x 1-1/4"	TCP3
	1/4-14 x 1-1/2"	TCP3
	1/4-14 x 2"	TCP3
	1/4-14 x 2-1/2"	TCP3
	1/4-14 x 3"	TCP3
	1/4-14 x 4"	TCP3
<b>HWH Self-Drilling Screw W/O Washer</b>		
	#8-18 X 1/2"	TCP2
	#8-18 X 5/8"	TCP2
	#8-18 X 3/4"	TCP2
	#8-18 X 1"	TCP2
	#8-18 X 1 1/2"	TCP2
	#10-16 x 1/2"	TCP3
	#10-16 X 5/8"	TCP3
	#10-16 x 3/4"	TCP3
	#10-16 x 1"	TCP3
	#10-16 X 1 1/4"	TCP3
	#10-16 x 1-1/2"	TCP3
	#12-14 x 3/4"	TCP3
	#12-14 x 1"	TCP3
	#12-14 x 1-1/4"	TCP3
	#12-14 x 1-1/2"	TCP3
	#12-14 x 2"	TCP3
	#12-14 X 2 1/2"	TCP3
	#12-14 x 3"	TCP3
	#12-14 X 4"	TCP3
	1/4-14 x 3/4"	TCP3
	1/4-14 x 1"	TCP3
	1/4-14 x 1-1/4"	TCP3
	1/4-14 x 1-1/2"	TCP3
	1/4-14 x 2"	TCP3
	1/4-14 x 2-1/2"	TCP3
	1/4-14 x 3"	TCP3
	1/4-14 x 4"	TCP3

**Check us out on line at [www.mbs-tools.com](http://www.mbs-tools.com)**

ATLAS FASTENER  
**HWH Self-Drilling Screw**  
*W/ EPDM Integral Washer*  
*Flat-Top*

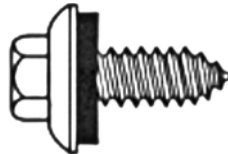
- Flat on top stabilizes socket during installation
- Special undercut entraps sealing washer... even when driven at angles
- EPDM Sealing washer assures water-proof seal
- Coated for added corrosion protection



MBS#	Description	Point
	1/4-14 X 7/8"	TCP 1
	#12-14 X 1"	TCP 2
	#12-14 X 1-1/4"	TCP 2
	#12-14 X 1-1/2"	TCP 2
	#12-14 X 2"	TCP 2
	#10-16 X 3/4"	TCP 3
	#10-16 X 1 1/2"	TCP 3
	#12-14 X 3/4"	TCP 3
	#12-14 x 2"	TCP 3
	#12-14 X 3"	TCP 3
	#12-14 X 4"	TCP 3
	1/4-14 X 1"	TCP 3
	1/4-14 X 1-1/4"	TCP 3
	1/4-14 X 1 1/2"	TCP 3
	1/4-14 X 2"	TCP 3
	1/4-14 X 3"	TCP 3
	1/4-14 X 4"	TCP 3
	#12-24 X 7/8"	TCP 4
	#12-24 X 1 1/4"	TCP 4.5
	#12-24 x 1 1/4"	TCP 5
	#12-24 X 1 1/2"	TCP 5
	#12-24 X 2"	TCP 5
	1/4-28 X 3"	TCP 5
	1/4-28 X 4"	TCP 5
	1/4-28 X 5"	TCP 5
	1/4-28 X 6"	TCP 5
	1/4-28 X 8"	TCP 5

ATLAS FASTENER  
**HWH Self-Tapping Screw**  
*W/ EPDM Integral Washer*  
*Flat-Top*

- Flat on top stabilizes socket during installation
- Special undercut entraps sealing washer... even when driven at angles
- EPDM Sealing washer assures water-proof seal
- Coated for added corrosion protection



MBS#	Description	Point
	#14 X 3/4"	A-AB
	#14 X 1"	A-AB
	#14 X 1-1/2"	A-AB
	#14 X 2"	A-AB
	#14 X 2 1/2"	A
	#14 X 3"	A
	#17-14 X 3/4"	A-AB
	#17-14 X 1"	A-AB

ATLAS FASTENER  
**HWH Woodgrips**  
*Polebarns*  
*Self Tapping*

- Hex Washer Head with washer
- Ideal for wood applications



MBS#	Description	Point
<i>Hex Washer head with washer</i>		
	#9 x 1"	A-SHARP
	#9 X 1 1/2"	A-SHARP
	#9 X 2"	A-SHARP
	#9 X 2 1/2"	A-SHARP
	#9 X 3"	A-SHARP

ATLAS FASTENER  
**Modified Truss Screws**  
*K-Lath*  
*Self Drill & Self Tapping*

- Modified Truss (k-lath) head
- Attaches wire lath to metal or wood



MBS#	Description	Point
<i>Modified Truss Head with sharp Point</i>		
	#8 X 1/2"	A-SHARP
	#8 X 3/4"	A-SHARP
	#8 X 1"	A-SHARP
	#8 X 1 1/4"	A-SHARP
	#8 X 1 5/8"	A-SHARP
	#8 X 1 7/8"	A-SHARP
	#8 X 2"	A-SHARP
	#8 X 2 1/2"	A-SHARP
	#8 X 3"	A-SHARP
<i>Modified Truss Head with self drill point</i>		
	#8 X 1/2"	TCP1
	#8 X 3/4"	TCP1
	#8 X 1"	TCP1
	#8 X 1 1/4"	TCP1
	#8 X 1 5/8"	TCP1
	#8 X 1 7/8"	TCP1
	#8 X 2"	TCP1
	#8 X 2 1/2"	TCP1
	#8 X 3"	TCP1

ATLAS FASTENER  
**Phillips Flat Head Screws**  
*With Wings*  
*Self Drill*

- Phillips Flat Head
- Attaches wood to metal
- Wings help to keep the threads in tact and break off once it reaches the steel



MBS#	Description	Point
<i>Phillips Flat Head self driller with wings</i>		
	#10 x 1 7/16"	TCP3
	#12 X 2 1/4"	TCP4
	#12 X 2 3/4"	TCP4
	1/4-20 X 3"	TCP4



ATLAS FASTENER  
**Phillips Wafer Head Screws**  
*Without Wings*  
*Self Drilling*



- Phillips wafer head
- Metal to Metal application

MBS#	Description	Point
<b>Phillips Wafer Head self Driller without wings</b>		
	#10-24 x 3/4"	TCP3
	#10-24 x 1"	TCP3
	#10-24 X 1 1/4"	TCP3
	#10-24 X 1 1/2"	TCP3

ATLAS FASTENER  
**Pancake Head Screws**  
*Self Drill*

- Pancake head seals clips to perlin
- Ideal for steel to steel



MBS#	Description	Point
<b>Pancake Head self drilling screw for panel clips</b>		
	# 10 x 5/8"	TCP 2
	#10-16 x 1"	TCP 3
	#12-14 x 1"	TCP 3

ATLAS FASTENER  
**Pancake Head Sharp Point Screws**  
*Self Tapping*

- Pancake head seals completely
- Sharp point for attaching metal roof clips to wood supports



MBS#	Description	Point
<b>Pncake Head Type A (sharp point)</b>		
	#10-12 x 1"	A-sharp
	#10-12 x 1 1/2"	A-sharp
	#12-11 x 1"	A-sharp

ATLAS FASTENER  
**Dekfast Roof Screws**  
*Self Drill*

- Phillips head and Hex Head Available
- Used for steel or wood application



**MBS# Description Point**

**Phillips Head Roofscrew**

#12 x 1 5/8"	TCP 1
#12 x 2 1/4"	TCP 1
#12 x 2 7/8"	TCP 1
#12 x 3 1/4"	TCP 1
#12 x 3 3/4"	TCP 1
#12 x 4 1/2"	TCP 1
#12 x 5"	TCP 1
#12 x 6"	TCP 1
#12 x 7"	TCP 1
#12 x 8"	TCP 1
#14 x 1 1/4"	TCP 1
#14 x 2"	TCP 1
#14 x 3"	TCP 1
#14 x 4"	TCP 1
#14 x 5"	TCP 1
#14 x 6"	TCP 1
#14 x 7"	TCP 1
#14 x 8"	TCP 1
#14 x 9"	TCP 1
#14 x 10"	TCP 1
#14 x 11"	TCP 1
#14 x 12"	TCP 1
#15 x 1 1/4"	TCP 1
#15 x 2"	TCP 1
#15 x 3"	TCP 1
#15 x 4"	TCP 1
#15 x 5"	TCP 1
#15 x 6"	TCP 1
#15 x 7"	TCP 1
#15 x 8"	TCP 1
#15 x 9"	TCP 1
#15 x 10"	TCP 1
#15 x 11"	TCP 1
#15 x 12"	TCP 1
#15 x 14"	TCP 1
#15 x 16"	TCP 1
#15 x 18"	TCP 1
#15 x 20"	TCP 1
#15 x 22"	TCP 1
#15 x 24"	TCP 1
#15 x 26"	TCP 1

**Hex Washer Head Roofscrew**

#12 x 1 5/8"	TCP 1
#12 x 2 1/4"	TCP 1
#12 x 2 7/8"	TCP 1
#12 x 3 1/4"	TCP 1
#12 x 3 3/4"	TCP 1
#12 x 4 1/2"	TCP 1
#12 x 5"	TCP 1
#12 x 6"	TCP 1
#12 x 7"	TCP 1
#12 x 8"	TCP 1

**Check us out on line at [www.mbs-tools.com](http://www.mbs-tools.com)**

**ATLAS  
 FAS-  
 TENER  
 Phil-**



**Phillips Pan Head Screws**  
**Self Drilling**

- Phillips Pan Head self driller
- zinc finish
- Ideal for light gauge steel

MBS#	Description	Point
<b>Phillips Pan Head self driller-zinc finish</b>		
	#6 x 3/8"	tcp 1
	#6 x 1/2"	tcp 1
	#6 x 3/4"	tcp 1
	#8 x 1/2"	tcp 1
	#8 x 3/4"	tcp 1
	#8 x 1"	tcp 1
	#8 x 1 1/4"	tcp 1
	#10 x 1/2"	tcp 1
	#10 x 5/8"	tcp 1
	#10 x 3/4"	tcp 1
	#10 x 1"	tcp 1

**ATLAS FASTENER  
 Phillips Pan Head  
 Sharp Point  
 Screws  
 Self Tapping**



- Phillips Pan Head Sharp Point
- Zinc Finish
- Ideal for wood applications

MBS#	Description	Point
<b>Phillips Pan Head Sharp point</b>		
	#6 x 3/8"	AB-sharp
	#6 x 1/2"	AB-sharp
	#6 x 5/8"	AB-sharp
	#6 x 3/4"	AB-sharp
	#6 x 1"	A-sharp
	#6 x 1 1/4"	A-sharp
	#6 x 1 1/2"	A-sharp
	#6 x 2"	A-sharp
	#7 x 1/2"	AB-sharp
	#7 x 3/4"	AB-sharp
	#7 x 1"	A-sharp
	#7 x 1 1/4"	A-sharp
	#7 x 1 1/2"	A-sharp
	#8 x 1/2"	AB-sharp
	#8 x 5/8"	AB-sharp
	#8 x 3/4"	AB-sharp
	#8 x 1"	A-sharp
	#8 x 1 1/4"	A-sharp
	#8 x 1 1/2"	A-sharp
	#8 x 2"	A-sharp
	#8 x 2 1/2"	A-sharp
	#8 x 3"	A-sharp
	#10 x 1/2"	AB-sharp
	#10 x 5/8"	AB-sharp
	#10 x 3/4"	AB-sharp
	#10 x 1"	A-sharp
	#10 x 1 1/4"	A-sharp

MBS#	Description	Point
	#10 x 1 1/2"	A-sharp
	#10 x 2"	A-sharp
	#10 x 2 1/2"	A-sharp
	#10 x 3"	A-sharp
	#12 x 1/2"	AB-sharp
	#12 x 5/8"	AB-sharp
	#12 x 3/4"	AB-sharp
	#12 x 1"	A-sharp
	#12 x 1 1/4"	A-sharp
	#12 x 1 1/2"	A-sharp
	#12 x 2"	A-sharp
	#12 x 2 1/2"	A-sharp
	#12 x 3"	A-sharp
	#14 x 1/2"	AB-sharp
	#14 x 5/8"	AB-sharp
	#14 x 3/4"	AB-sharp
	#14 x 1"	A-sharp
	#14 x 1 1/4"	A-sharp
	#14 x 1 1/2"	A-sharp
	#14 x 2"	A-sharp
	#14 x 2 1/2"	A-sharp
	#14 x 3"	A-sharp

**ATLAS FASTENER  
 Drywall Screws  
 Coarse & Fine Threads  
 Self Drill & Self Tapping**

- Phillips bugle head
- Self driller for metal
- Sharp point for wood and sheetrock + Hi/Lo thread
- Black phosphate and zinc finish available



MBS#	Description	Point	Finishes available
<b>Fine thread sharp point</b>			
	#6 x 1"	A-sharp	Black
	#6 x 1 1/8"	A-sharp	Black
	#6 x 1 1/4"	A-sharp	Black
	#6 x 1 1/2"	A-sharp	Black
	#6 x 1 5/8"	A-sharp	Black
	#6 x 2"	A-sharp	Black
	#7 x 2"	A-sharp	Black
	#7 x 2 1/4"	A-sharp	Black
	#8 x 2 1/2"	A-sharp	Black
	#8 x 3"	A-sharp	Black
	#10 x 3 1/2"	A-sharp	Black
	#10 x 3 3/4"	A-sharp	Black
	#10 x 4"	A-sharp	Black
	#10 x 4 1/2"	A-sharp	Black
	#10 x 5"	A-sharp	Black
	#10 x 6"	A-sharp	Black
<b>Coarse thread sharp point</b>			
	#6 x 1"	A-sharp	Black
	#6 x 1 1/8"	A-sharp	Black
	#6 x 1 1/4"	A-sharp	Black
	#6 x 1 1/2"	A-sharp	Black
	#6 x 1 5/8"	A-sharp	Black
	#6 x 2"	A-sharp	Black
	#7 x 2"	A-sharp	Black

MBS#	Description	Point	Finishes available
	#7 x 2 1/4"	A-sharp	Black
	#8 x 2 1/2"	A-sharp	Black
	#8 x 3"	A-sharp	Black
	#10 x 3 1/2"	A-sharp	Black
	#10 x 3 3/4"	A-sharp	Black
	#10 x 4"	A-sharp	Black
	#10 x 4 1/2"	A-sharp	Black
	#10 x 5"	A-sharp	Black
	#10 x 6"	A-sharp	Black

**Hi/Lo Thread sharp point**

MBS#	Description	Point	Finishes available
	#6 x 1"	A-sharp	Black
	#6 x 1 1/8"	A-sharp	Black
	#6 x 1 1/4"	A-sharp	Black
	#6 x 1 5/8"	A-sharp	Black
	#7 x 2"	A-sharp	Black
	#7 x 2 1/4"	A-sharp	Black
	#8 x 2 1/2"	A-sharp	Black
	#8 x 3"	A-sharp	Black

**Self drilling drywall screws**

MBS#	Description	Point	Finishes available
	#6 x 1"	Tek 1	Zinc, Black
	#6 x 1 1/8"	Tek 1	Zinc, Black
	#6 x 1 1/4"	Tek 1	Zinc, Black
	#6 x 1 5/8"	Tek 1	Zinc, Black
	#6 x 1 7/8"	Tek 1	Zinc, Black
	#8 x 2 3/8"	Tek 1	Zinc, Black
	#8 x 2 5/8"	Tek 1	Zinc, Black
	#8 x 3"	Tek 1	Zinc, Black

**ATLAS FASTENER  
 Drywall Screws  
 Coarse Thread  
 Self Tapping**

- Coarse thread for gripping drywall
- Phillips drive eliminated stripping
- Black Finish
- Bugle head countersinks flush with drywall



MBS#	Description	Point
<b>Phillips drive coarse thread drywall screws</b>		
	#6 x 1"	sharp
	#6 x 1 1/8"	sharp
	#6 x 1 1/4"	sharp
	#6 x 1 1/2"	sharp
	#6 x 1 5/8"	sharp
	#6 x 2"	sharp
	#7 x 2"	sharp
	#7 x 2 1/4"	sharp
	#8 x 2 1/2"	sharp
	#8 x 3"	sharp
	#10 x 3 1/2"	sharp
	#10 x 3 3/4"	sharp
	#10 x 4"	sharp
	#10 x 4 1/2"	sharp
	#10 x 5"	sharp
	#10 x 6"	sharp



ATLAS FASTENER  
**Phillips Head Deck Screws**  
*Self Tapping*

- Ideal for wood decking
- Sharp point to pierce wood
- Phillips drive
- Exterior Coated

MBS#	Description
6 x1	6 x1
6 x 1-1/4	6 x 1¼
6 x 1-5/8	6 x 1⅝
7 x 2	7 x 2
7 x 2-1/4	7 x 2¼
7 x 2-1/2	7 x 2½
8 x 2-1/2	8 x 2½
8 x 3	8 x 3
10 x 3-1/2	10 x 3½
10 x 4	10 x 4
10 x 5	10 x 5
10 x 6	10 x 6



MARSON  
**Marson HP-2 Hand Riveter**



- Largest selling hand riveter.
- Sets up to 3/16" steel rivets.
- Includes 4 nose piece mounted on riveter

MBS#
39000

POP RIVET TOOL  
**HAND RIVET TOOL**  
**HEAVY DUTY**  
**PRP-26A**



- Capacity: up to 5/32" diameter
- Nose Pieces Included: 1/8"
- Built to survive the toughest abuse

MBS#	Desc.
PRP-26A	HD Rivet Tool

ATLAS FASTENER  
**Mushroom Head Nail ins**  
**Zamac**

- Concrete fasteners
- Attaches material to concrete



MBS#	Description
<b>Mushroom head Nail-Ins (100/box)</b>	
	3/16 x 7/8"
	1/4 x 3/4"
	1/4 x 1"
	1/4 x 1 1/4"
	1/4 x 1 1/2"
	1/4 x 2"
<b>Bulk Mushroom Head Nail-Ins (1000/box)</b>	
	3/16 x 7/8"
	1/4 x 3/4"
	1/4 x 1"
	1/4 x 1 1/4"
	1/4 x 1 1/2"
	1/4 x 2"

MARSON  
**Marson "Big Daddy" Rivet Gun**



- Extra long handles provide great leverage and permit working a foot beyond natural reach
- Includes 3/16", 1/4", and 5/32" nose pieces which are stored in the body

MBS#
39010

**MBS. Your one-stop for all your tool and fastener needs!**



**ATLAS FASTENER**

**Rivets**

- Button Head
- Open end Rivets



MBS#	Description	Drill Number	Grip Range
<b>Steel Rivets</b>			
#4-1 Steel	1/8" or #30	.032-.062"	
#4-2 Steel	1/8" or #30	.063-.125"	
#4-3 Steel	1/8" or #30	.126-.187"	
#4-4 Steel	1/8" or #30	.188-.250"	
#4-5 Steel	1/8" or #30	.251-.312"	
#4-6 Steel	1/8" or #30	.313-.375"	
#4-8 Steel	1/8" or #30	.376-.500"	
#4-10 Steel	1/8" or #30	.501-.625"	
#5-2 Steel	5/32" or #20	.062-.125"	
#5-3 Steel	5/32" or #20	.126-.187"	
#5-4 Steel	5/32" or #20	.188-.250"	
#5-6 Steel	5/32" or #20	.251-.375"	
#5-8 Steel	5/32" or #20	.376-.500"	
#5-10 Steel	5/32" or #20	.501-.675"	
#5-12 Steel	5/32" or #20	.676-.750"	
#6-2 Steel	3/16" or #11	.062-.125"	
#6-4 Steel	3/16" or #11	.126-.250"	
#6-6 Steel	3/16" or #11	.251-.375"	
#6-8 Steel	3/16" or #11	.376-.500"	
#6-10 Steel	3/16" or #11	.501-.625"	
#6-12 Steel	3/16" or #11	.626-.750"	
#6-14 Steel	3/16" or #11	.751-.875"	
#6-16 Steel	3/16" or #11	.876-1"	
#8-2 Steel	1/4"	.062-.125"	
#8-4 Steel	1/4"	.062-.250"	
#8-6 Steel	1/4"	.251-.375"	
#8-8 Steel	1/4"	.376-.500"	
#8-10 Steel	1/4"	.501-.625"	
#8-12 Steel	1/4"	.626-.750"	
#8-14 Steel	1/4"	.751-.875"	
#8-16 Steel	1/4"	.876-1"	
<b>Stainless Steel Rivets</b>			
#4-1SS Stainless	1/8" or #30	.032-.062"	
#4-2SS Stainless	1/8" or #30	.063-.125"	
#4-3SS Stainless	1/8" or #30	.126-.187"	
#4-4SS Stainless	1/8" or #30	.188-.250"	
#4-5SS Stainless	1/8" or #30	.251-.312"	
#4-6SS Stainless	1/8" or #30	.313-.375"	
#4-8SS Stainless	1/8" or #30	.376-.500"	
#5-2SS Stainless	5/32" or #20	.062-.125"	
#5-3SS Stainless	5/32" or #20	.126-.187"	
#5-4SS Stainless	5/32" or #20	.188-.250"	
#5-6SS Stainless	5/32" or #11	.251-.375"	
#5-8SS Stainless	5/32" or #20	.376-.500"	
#5-10SS Stainless	5/32" or #20	.501-.625"	
#6-2SS Stainless	3/16" or #11	.062-.125"	
#6-4SS Stainless	3/16" or #11	.126-.250"	
#6-6SS Stainless	3/16" or #11	.251-.375"	

MBS#	Description	Drill Number	Grip Range
#6-8SS Stainless	3/16" or #11	.376-.500"	
#6-10SS Stainless	3/16" or #11	.501-.625"	
#6-12SS	3/16" or #11	.626-.750"	
#6-14SS Stainless	3/16" or #11	.751-1"	
#8-4SS Stainless	1/4"	.062-.250"	
#8-6SS Stainless	1/4"	.251-.375"	
#8-8SS Stainless	1/4"	.376-.500"	
#8-10SS Stainless	1/4"	.501-.625"	
#8-12SS Stainless	1/4"	.626-.750"	

**Copper Rivets**

#4-2C Copper	1/8" or #30	.063-.125"
#4-4C Copper	1/8" or #30	.188-.250"

**Aluminum Rivets**

#4-1A Aluminum	1/8" or #30	.032-.062"
#4-2A Aluminum	1/8" or #30	.063-.125"
#4-3A Aluminum	1/8" or #30	.126-.187"
#4-4A Aluminum	1/8" or #30	.188-.250"
#4-5A Aluminum	1/8" or #30	.251-.312"
#4-6A Aluminum	1/8" or #30	.313-.375"
#4-8A Aluminum	1/8" or #30	.376-.500"
#4-10A Aluminum	1/8" or #30	.501-.625"
#5-2A Aluminum	5/32" or #20	.062-.125"
#5-3A Aluminum	5/32" or #20	.126-.187"
#5-4A Aluminum	5/32" or #20	.188-.250"
#5-6A Aluminum	5/32" or #20	.251-.375"
#5-8A Aluminum	5/32" or #20	.376-.500"
#5-10A Aluminum	5/32" or #20	.501-.625"
#5-12A Aluminum	5/32" or #20	.626-.750"
#6-2A Aluminum	3/16" or #11	.062-.125"
#6-4A Aluminum	3/16" or #11	.126-.250"
#6-6A Aluminum	3/16" or #11	.251-.375"
#6-8A Aluminum	3/16" or #11	.376-.500"
#6-10A Aluminum	3/16" or #11	.501-.625"
#6-12A Aluminum	3/16" or #11	.626-.750"
#6-14A Aluminum	3/16" or #11	.751-.875"
#6-16A Aluminum	3/16" or #11	.751-1"
#6-20A Aluminum	3/16" or #11	1.125-1.250"
#8-4A Aluminum	1/4"	.062-.250"
#8-6A Aluminum	1/4"	.251-.375"
#8-8A Aluminum	1/4"	.376-.500"
#8-10A Aluminum	1/4"	.501-.625"
#8-12A Aluminum	1/4"	.626-.750"
#8-14A Aluminum	1/4"	.751-.875"

**MBS. Your one-stop for all your tool and fastener needs!**



POWERS FASTENERS  
**Expansion Anchors**  
*Wedge Type*  
**Power-Stud™**

Base material: Concrete, stone

The Power-Stud™ anchor is a one piece, wedge style anchor available in carbon steel. Threaded version is designed for use in solid concrete. The drill bit diameter needed for proper installation is the same as the anchor diameter.

Anchor and styles:

Carbon steel Power-Stud™ anchors are manufactured from carbon steel which is plated with commercial bright zinc and a supplementary chromate treatment in accordance with ASTM specification B 633, SC1, Type III.

Stainless steel Power-Stud™ anchors are manufactured from AISI Type 304 / 304 Cu and Type 316 stainless steel which is passivated. The length is the overall length of the anchor. Allow for fixture thickness plus one anchor diameter for the nut and washer thickness when selecting a length.



**MBS# Size (in.) Min. Embed. (in) Thread Length (in) Std. Box Std. Ctn.**

**Carbon Steel Power-Stud~**

7400	¼ x 1¾	1½	¾	100	500
7413	⅜ x 3	1½	1⅞	50	250
7414	⅜ x 3½	1½	2⅞	50	250
7416	⅜ x 5	1½	3⅞	50	250
7417	⅜ x 7	1½	5⅞	50	200
7426	½ x 7	2¼	5⅞	25	100
7427	½ x 8½	2¼	7⅞	25	100
7430	⅝ x 3½	2¾	2	25	100
7433	⅝ x 5	2¾	3½	25	100
7436	⅝ x 7	2¾	5½	25	75
7438	⅝ x 8½	2¾	7	25	75
7439	⅝ x 10	2¾	8½	25	75
7441	¾ x 4¾	3⅜	2⅞	20	60
7444	¾ x 6¼	3⅜	4⅞	20	60
7446	¾ x 7	3⅜	5⅞	20	60
7448	¾ x 8½	3⅜	6⅞	10	40
7449	¾ x 10	3⅜	8⅞	10	30
7451	¾ x 12	3⅜	10⅞	10	30
7450	⅞ x 6	3⅞	2¾	10	40
7452	⅞ x 8	3⅞	4¾	10	40
7454	⅞ x 10	3⅞	6¾	10	30
7473	1¼ x 9	5⅞	4¾	5	15
7475	1¼ x 12	5⅞	7¾	5	15

**Stainless Steel Power-Stud~**

7300	¼ x 1¾	1½	¾	100	500
7302	¼ x 2¼	1½	1¼	100	500
7304	¼ x 3¼	1½	2¼	100	500
7310	⅜ x 2¼	1½	1¼	50	250
7313	⅜ x 3	1½	1⅞	50	250
7314	⅜ x 3½	1½	2⅞	50	250
7315	⅜ x 3¾	1½	2⅞	50	250
7316	⅜ x 5	1½	3⅞	50	250
7320	½ x 2¾	2¼	1⅞	50	200
7322	½ x 3¾	2¼	2⅞	50	200
7323	½ x 4½	2¼	3⅞	50	200
7324	½ x 5½	2¼	4⅞	50	150
7326	½ x 7	2¼	5⅞	25	100
7330	⅝ x 3½	2¾	2	25	100
7332	⅝ x 4½	2¾	3	25	100
7333	⅝ x 5	2¾	3½	25	100
7334	⅝ x 6	2¾	4½	25	75
7336	⅝ x 7	2¾	5½	25	75
7338	⅝ x 8½	2¾	7	25	75
7340	¾ x 4¼	3⅜	2⅞	20	60
7341	¾ x 4¾	3⅜	2⅞	20	60
7342	¾ x 5½	3⅜	3⅞	20	60
7344	¾ x 6¼	3⅜	4⅞	20	60
7346	¾ x 7	3⅜	5⅞	20	60
7348	¾ x 8½	3⅜	6⅞	10	40
7349	¾ x 10	3⅜	8⅞	10	30
7615	⅜ x 3¾	1½	2⅞	50	250
7624	½ x 5½	2¼	4⅞	50	150



POWERS FASTENERS  
**Expansion Anchors**  
*Sleeve Type*  
**Lok-Bolt™**

Base material: Concrete, block, brick, stone

The Lok-Bolt™ anchor is a pre-assembled single unit sleeve anchor available in carbon steel and stainless steel which can be used in concrete, block, brick and stone. Extension sleeves are added to create longer lengths.

The length is measured from below the washer to the end of the anchor. Does not have a compression ring.



MBS#	Size (in)	Drill Dia. (in)	Min. Embed. (in)	Std. Box	Std. Ctn.
<b>Hex Nut Lok-Bolt- Carbon Steel</b>					
5010	5/16 x 2 1/2	5/16	1 1/2	100	500
5015	3/8 x 1 7/8	3/8	1 5/8	50	500
5022	3/8 x 4	3/8	1 5/8	50	250
5025	1/2 x 2 1/4	1/2	2 1/8	25	250
5034	1/2 x 4	1/2	2 1/4	25	125
5033	1/2 x 5 1/4	1/2	2 1/4	25	125
5032	1/2 x 6	1/2	2 1/4	10	100
5035	5/8 x 2 1/4	5/8	2 1/8	25	125
5038	5/8 x 3	5/8	2 3/4	25	125
5045	5/8 x 6	5/8	2 3/4	10	100
5050	3/4 x 2 1/2	3/4	2 1/8	10	100
5060	3/4 x 5 3/4	3/4	3 3/8	10	30
5065	3/4 x 7 1/2	3/4	3 3/8	10	30
<b>Acorn Nut Lok-Bolt- Carbon Steel</b>					
5125	1/4 x 5/8	1/4	1/2	100	1000
<b>Round Head Lok-Bolt- Carbon Steel</b>					
5220	1/4 x 3 3/4	1/4	1 1/8	100	1000
5225	5/16 x 2 3/8	5/16	1 1/2	100	1000
5230	5/16 x 3 3/8	5/16	1 1/2	100	500
5235	3/8 x 2 1/2	3/8	1 5/8	50	500
5240	3/8 x 3 3/4	3/8	1 5/8	50	250
<b>Combo Flat Head Lok-Bolt- Carbon Steel</b>					
5310	1/4 x 2	1/4	1 1/8	100	1000
5315	1/4 x 3	1/4	1 1/8	100	1000
5320	1/4 x 4	1/4	1 1/8	100	500
5325	1/4 x 5 1/4	1/4	1 1/8	100	500
5340	3/8 x 2 3/4	3/8	1 5/8	50	500
5345	3/8 x 4	3/8	1 5/8	50	250
5350	3/8 x 5	3/8	1 5/8	50	250
5360	3/8 x 6	3/8	1 5/8	50	250

**When only the best will do,  
Call MBS Tool and Fastener**

POWERS FASTENERS  
**Hammer-Capsule Systems**  
*Ester Based Resin*

Base material: Solid concrete  
Anchor material: Ester based resin  
The Hammer-Capsule® system

consists of a self contained, single use, two-part glass capsule into which threaded anchor rod or reinforcing bars can be directly driven without the need for a chisel point or spinning action. It is designed for use in the installation of 3/8" through 1" diameter threaded rod in solid concrete and masonry materials. It can also be used to install reinforcing bars.

\*The drill bit diameters and depths listed are for installations using thread rod.



MBS#	Size (in)	*Drill Dia. (in)	Min. Depth (in.)	Std. Box	Std. Ctn.
6702	3/8	7/16	3 1/2	10	500
6703	1/2	9/16	4 1/2	10	200
6704	5/8	1 1/16	5	10	100
6705	3/4	7/8	6	5	50
6706	7/8	1	7	5	50
6707	1	1 1/8	8 1/4	5	50

POWERS FASTENERS  
**Concrete Anchors**  
*Carbon Steel*

Base material: Solid concrete, solid block, hard stone  
Anchor material: Carbon steel  
The steel dropin is an all-steel, machine bolt anchor available in carbon steel. It can be used in

solid concrete, hard stone, and solid block. A coil-thread version for forming applications is also available.



MBS#	Size (in)	Drill Dia. (in)	Min. Depth (in)	Thread Depth (in)	Std. Box	Std. Ctn.
6304	1/4	3/8	1	7/16	100	1000
6306	3/8	1/2	1 1/16	5/8	50	500
6308	1/2	5/8	2	1 3/16	50	250
6320	5/8	7/8	2 1/2	1 3/16	25	125
6312	3/4	1	3 3/16	1 3/8	10	50

POWERS FASTENERS  
**Injection Epoxy Gels**  
*Standard Set & Fast Set*  
**Power-Fast®**

Base material: Solid concrete, block, brick, stone or hollow masonry

Anchor material: Epoxy standard set and fast set

The Power-Fast® Epoxy Injection Gel is a two component a low odor structural epoxy used for anchoring threaded rod, bolts, reinforcing bars, and smooth dowels into concrete and other solid base materials. The system can also be used to anchor into hollow masonry materials using threaded rod and screen tubes.: Std. Box: 1, Std. Ctn.: 12

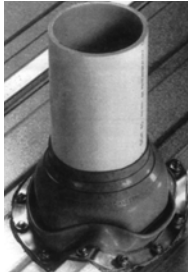


MBS#	Description
8402	15 Fluid Ounce Cartridge-Fast Set
8422	24 Fluid Ounce Cartridge-Fast Set



ITW BUILDEX  
**Pipe Flashings**  
*Flexible*  
**Dektite®**

- Made of long life, flexible, weatherproof gray EDPM rubber or red silicone
- Flexible, corrosion resistant aluminum base conforms to any panel configuration
- EDPM and silicone will not crack or break
- Pipe diameter markings are clearly indicated for accurate fitting
- Designed for 1/4" to 24" diameter pipes
- One piece construction is easy to install
- Plated cone adjusts to any roof pitch and allows for complete flexibility
- EDPM has a continuous service temperature range of -30°F to +250°F
- Silicone has a continuous service temperature range of -40°F to +350°F
- Proven resistance to ozone and ultra-violet light



Product specifications

Pipe diameter ranges: 1/4" to 24"

Materials: EDPM - standard and retrofit silicone - high temperature

Applications

- Plumbing, heating, air conditioning, electrical and exhaust vents

Note: When used on roofs where pitch is steeper than 20 degrees, or when used on deep ribbed profile roof panel (1 1/2" deep corrugation or more), consider using next larger size Dektite that will accommodate the same pipe diameter.

Recommended sealant: Chemseco Sikaflex® sealant.

Recommended Fastener: 1/4-14 x 1 1/8" Scots®Teks®/1.

MBS#	Description	Pipe O/S Dia. (in)	Dektite Base Dia. (in)	Dektite Height (in)
4003910	1	1/4-2	4 3/4	3
4004910	2	1 3/4-3 1/4	6 1/4	4
4009910	3	1/4-4	7 3/4	4
4011910	4	3/7/06	9 1/4	5
4016910	5	4/8/06	10 3/4	5
4018910	6	5/10/06	12 1/2	6
4020910	7	6/12/06	14 1/2	6
4025910	8	7/14/06	16 1/2	6
4028910	9	10/19/06	25 3/8	8

ITW BUILDEX  
**Pipe Flashings**  
*Flexible*  
**Retrfit Dektite®**

- Made of long life, flexible, weatherproof gray EDPM rubber or red silicone
- Flexible, corrosion resistant aluminum base conforms to any panel configuration
- EDPM and silicone will not crack or break
- Pipe diameter markings are clearly indicated for accurate fitting
- One piece construction is easy to install
- Plated cone adjusts to any roof pitch and allows for complete flexibility
- EDPM has a continuous service temperature range of -30°F to +250°F
- Silicone has a continuous service temperature range of -40°F to +350°F
- Proven resistance to ozone and ultra-violet light



Product specifications

Pipe diameter ranges: 3/4" to 10"

Materials: EDPM - standard and retrofit silicone - high temperature

Applications

- Plumbing, heating, air conditioning, electrical and exhaust vents

MBS#	Dektite Size Number	Pipe O/S Dia. (in)	Dektite Base Dia. (in)	Dektite Height (in)
4029910	801	3/4-2 3/4	6 3/10	3 1/2
4030910	802	2-7 1/4	10 3/4	5 3/8
4031910	803	3 1/4-10	14 1/2	5 3/8

ITW BUILDEX  
**Roof Flashing System Base Kits**  
*Flexible*  
**Flashdek®**

The most unique flexible, weatherproof roof flashing system.

- Unique aluminum edging design conforms to all roof panel configurations
- Based on a proprietary formulation of coated polyester Hypalon®
- Superb ozone, acid rain and ultraviolet resistant properties
- Soil and stain resistant
- Excellent abrasion resistance
- -40°F to +190°F continuous service temperature range



Applications

Parapet wall, stepped roof, transition wall, gambrell roof, roof penetrations.

Base kit contains:

- Flashdek material
- 2 termination strips
- 1 roll Hypalon® splice material

Material: Hypalon® Coated Polyester

MBS#	Description (in. x ft.)
4054911	9 x 50
4060911	12 x 50
4066911	18 x 50

*If you don't see it we can get it for you.*



**CLOSURES**  
**Closure Strips**

The original industry closure material — time tested-millions of feet installed over the last 30-plus years.



- Polyethylene foam for exceptional strength and compressibility.
- Most configurations are cut with dovetails that eliminate gapping between pieces.
- Moisture and water vapor transmission is barely measurable.
- Adhesive applied to the contact side of the panel surface assures positive positioning during installation.
- Resist damaging ultra violet rays and ozone deterioration.

MBS#	Adhesive
R-INNERW	W/Adhesive
R-INNER	No Adhesive
R-OUTERW	W/Adhesive
R-OUTER	No Adhesive
M/U-INNERW	W/Adhesive
M/U-OUTERW	W/Adhesive
A-INNERW	W/Adhesive
A-OUTERW	W/Adhesive

**SIMPSON STRONG-TIE**  
**Manual Dispensing Tool**  
*For 22 oz. Cartridges*

The EDT22B features a molded nylon reinforced body for ultimate strength and light weight. The handle is positioned under the cartridge for balance and ease of use. The drive mechanism is released by pushing forward on the drive handle. Cartridges "snap-lock" into position.



MBS#
EDT22B

**SIMPSON STRONG-TIE**  
**Epoxy Cartridge**  
**High Strength**  
**Set**

Epoxy-Tie SET epoxy is a two-component, low odor, 1:1 ratio, 100% solids epoxy-based adhesive for use as a high strength, non-shrink anchor grouting material. Resin and hardener are dispensed and mixed simultaneously through the mixing nozzle. SET meets or exceeds the ASTM C-881 specification for Type I, II, IV and V, Grade 3, Class B and C.



- USES: Threaded rod anchoring, Rebar dowelling, Bonding hardened concrete to hardened concrete, Pick proof sealant around doors, windows and fixtures, Paste-over for crack injection
- Cartridge Type: Side-by-side

MBS#	Cartridge Cap.	Carton Pk	Dispensing Tool(s)	Use Mixing Nozzle#
SET1.7KTA	1.7 oz	12	Adapter Included for Standard Caulking Tool	EMN1.7 (2 included)
SET22	22 oz	12	CDT10 or High Quality Standard Caulking Tool	EMN22
SET56	56 oz	6	EDT56AP	EMN50

**PORTEOUS FASTENER COMPANY**  
**All Thread Rods**  
**Grade A, NC**



MBS#	Size	PC Ft	Bundle Qty
<b>Plain</b>			
2403-500	1/4"-20	150	-
2406-500	1/4"-20	300	-
2410-500	1/4"-20	500	-
2412-500	1/4"-20	600	-
2503-500	5/16"-18	105	-
2506-500	5/16"-18	210	-
2510-500	5/16"-18	350	-
2512-500	5/16"-18	420	-
2603-500	3/8"-16	75	-
2606-500	3/8"-16	150	-
2610-500	3/8"-16	250	-
2610-510	3/8"-16	250	-
2612-500	3/8"-16	300	-
2612-510	3/8"-16	300	-
2703-500	7/16"-14	51	-
2706-500	7/16"-14	102	-
2803-500	1/3"-13	36	-
2806-500	1/3"-13	72	-
2810-500	1/3"-13	120	-
2810-510	1/3"-13	120	-
2812-500	1/3"-13	144	-
2812-510	1/3"-13	144	-
3003-500	5/8"-11	24	-
3006-500	5/8"-11	48	-
3010-500	5/8"-11	80	-
3010-510	5/8"-11	80	-
3012-500	5/8"-11	96	-
3012-510	5/8"-11	96	-
3203-500	3/4"-10	15	-
3206-500	3/4"-10	30	-
3210-500	3/4"-10	50	-
3210-510	3/4"-10	50	-
3212-500	3/4"-10	60	-
3212-510	3/4"-10	60	-
3403-500	7/8"-9	12	-
3406-500	7/8"-9	24	-
3410-500	7/8"-9	40	-
3410-510	7/8"-9	40	-
3412-500	7/8"-9	48	-
3412-510	7/8"-9	48	-
4003-500	1"-8	6	3
4006-500	1"-8	12	-
4010-500	1"-8	20	-
4010-510	1"-8	20	-
4012-500	1"-8	24	-
4012-510	1"-8	24	-
4103-500	1 1/8"-7	3	3
4106-500	1 1/8"-7	6	3
4112-500	1 1/8"-7	12	-
4203-500	1 1/4"-7	3	3
4206-500	1 1/4"-7	6	3
4212-500	1 1/4"-7	12	-
<b>Zinc Blue Finish</b>			
0601-441	6"-32	1 GRN	10
0801-441	8"-32	1 RED	10
0602-441	6"-32	2 GRN	10
0802-441	8"-32	2 RED	10



**POWERS FASTENERS**

**Powder Actuated Fastening System**

The P3500 is a low velocity, semi-automatic .27 caliber tool which can be used to install .300" head drive pins, 8mm head drive pins and 1/4"- 20 threaded studs, up to 3" in total length. The P3500 is designed for high speed, durability and repetitive volume applications.



- General Applications and Uses: Conduit clip to concrete, wood to concrete, wood to steel, electrical fixture to concrete, electrical fixture to steel, concrete forming, commercial and residential construction
- Tool Body: Precision cast aluminum
- Tool Length: 13-5/8"
- Pin Length: 1/2" to 3" total length
- Load Type: .. 27 Caliber 10 Load Strip and . 27 Caliber Safety Strip
- Power Level: Brown (2), Green (3), Yellow (4), Red (5)

MBS#
P3500

**POWERS FASTENERS**

**Ceiling Clip**

- Ceiling clip (no pin) 9/32" and 5/16" holes
- 100 per box / 1000 per carton



MBS#
50400

**POWERS FASTENERS**  
**Nailing Gas Fuel Cell**

*Trak-It®*

- Works in temperatures down to 10°F
- 20 per box / 80 per carton



MBS#
55010

**POWERS FASTENERS**

**Standard Pins**

*With Break-Free Collation*

- Smooth shank with rolled point
- 100 per box / 5000 per carton



MBS#	Size	Finish
55032	3/4"	Black
55033	1"	Zinc
55034	1 1/4"	Zinc
55035	1 1/2"	Zinc

**POWERS FASTENERS**  
**Gas Fastening Systems**

*Pole Tool*  
*Trak-It®*

- Pole tools come complete with Trak-It® C3-ST (Short trak tool).



MBS#	Length
55048	6'
55051	8'

**POWERS FASTENERS**

**Rod Hangers**

- Applications: For attaching rod overhead to steel beams, wood or concrete ceilings for the purpose of suspending utilities, cable trays, conduit and pipe
- Contractors: Electricians, Plumbers, Mechanical Contractors
- 100 per box / 1000 per carton



MBS#	Size	For Pin Size
55050	1/4"	55080
55052	3/8"	55081

**POWERS FASTENERS**

**Conduit Clips**  
**1 Hole Strap**

- Ribbed
- Applications: For attaching conduit and light duty pipe to walls and ceilings of any base material including wood, steel beams, concrete and steel purlins
- Contractors: Electricians
- Recommended Pin Size: 55080
- 100 per box / 1000 per carton



MBS#	Size
55059	1/2"
55061	3/4"

**POWERS FASTENERS**

**Strap Washer**

- Size: 1/2"
- Applications: For attaching duct straps to suspend HVAC duct work onto ceilings of various base numbers
- Contractors: Sheet Metal Contractors
- Recommended Pin Sizes: 55080
- 100 per box / 1000 per carton



MBS#
55062

***We have what you need at a price that can't be beat.***



**POWERS FASTENERS**  
**Mini Conduit Clips**

- Applications: For attaching conduit and piping to steel beams, wood and concrete ceilings.
- Contractors: Electricians
- Recommended Pin Size: 55080
- 100 per box / 1000 per carton



MBS#	Size
55064	1/2"
55066	3/4"
55068	1"

**POWERS FASTENERS**  
**Stick-E Pins**  
**Step Shank**

- 1 pin for 90% of ALL applications
- Includes 1 free fuel cell
- 1000 per box / 5000 per carton
- \*(k) knurled



MBS#	Size
55080	780 Step Shank KPins (k)
55081	1" Step Shank Pins (k)

**POWERS FASTENERS**  
**Right Angle Clip**

- Size: Wirehole 0.278"
- Applications: For suspending acoustical ceiling systems or light fixtures.
- Contractors: Acoustical & Ceiling Contractors
- Recommended Pin Sizes: 55080, 55081
- 100 per box / 1000 per carton



MBS#
55092

**POWERS FASTENERS**  
**Gas Fastening Systems**  
**Trak-It® C3-ST**

Trak-It® Fasteners and Blue Nailer-Gas Fuel Cells are designed to be used with the Powers Trak-It® Tool and can also be installed with the ITW Ramset® TrakFast® tool. Ten fasteners are collated on each patented, plastic top hat-style strip. Use for light duty static applications such as dry-wall track to concrete, block or steel, lath to concrete or block, furring strips to concrete or block, and plywood to concrete or block base materials. The fuel cell, with its unique right angle metering valve, contains enough gas to install up to 1200 fasteners. Each package contains 1000 fasteners and 1 fuel cell.



MBS#
55002

**SIMPSON STRONG-TIE**  
**Mixing Nozzle**  
**Adhesive Accessories**

An 18-element mixing nozzle for use with 22 oz. and 56 oz. Epoxy-Tie® cartridges and the 30 oz. AT Acrylic-Tie® adhesive cartridge. This is a one piece nozzle with integrated nut (separate retaining nut not required). 1 per pack / 12 nozzles per carton



MBS#
EMN22i

**POWERS FASTENERS**  
**Powder Actuated Fastening System**  
**P3600™**

The P3600 is a powerful, heavy-duty, low velocity, semi-automatic .27 caliber tool, which can be used to install 10mm head .177 diameter shank drive pins, 3/8"-16 threaded studs, and 3/8" headed drive pins. The P3600 is designed for applications where more power is needed, such as attaching 2 x 4 to hard aggregate or steel. The tool utilizes a red (5) or purple (6) .27 caliber strip.



- General Applications and Uses: Ceiling clip assemblies, track to floor/door frames, wood to concrete, electrical fixtures, duct straps, concrete forms/basket clips, forming pins
- Tool Body: Precision cast aluminum
- Tool Length: 13-5/8"
- Pin Length: Up to 3" total length
- Load Type: .27 Caliber 10 load strip and .27 caliber safety strip

MBS#
P3600

**POWERS FASTENERS**  
**Powder Actuated Fastening System**  
**P3801™**

Powerful and reliable heavy-duty powder actuated tool, for installing 3/8" threaded studs into concrete and steel. This tool features an easy load ejector and has a low re-coil for greater operator comfort. The P3801 is independent of any external power source saving you time and money.



- General Applications and Uses: Hanging Sprinkler pipe, Hard concrete, Electrical fixtures, Heavy-duty applications for steel and concrete
- Tool Body: Precision cast aluminum
- Tool Length: 14"
- Pin Length: 1/2" to 3" total length
- Load Type: .27 Caliber single short and long
- Power Level: Red (5), Purple (6)

MBS#
P3801



**POWERS FASTENERS**  
**Powder Actuated Fastening System**

The PA3500 is a modified version of the P3500 that includes a power adjuster, allowing the operator to effectively decrease the power level of the load being used by up to two (2) levels. For example, a red load can be adjusted down to the level of a green load.



- General Applications and Uses: Conduit clip to concrete, wood to concrete, wood to steel, electrical fixture to concrete, electrical fixture to steel, concrete forming, commercial and residential construction
- Tool Body: Precision cast aluminum
- Tool Length: 13-5/8"
- Pin Length: 1/2" to 3" total length
- Load Type: .. 27 Caliber 10 Load Strip and . 27 Caliber Safety Strip; Power Level: Brown (2), Green (3), Yellow (4), Red (5)

MBS#
PA3500

**SIMPSON STRONG-TIE**  
**Anchoring Adhesives**  
*High Strength Epoxy-Tie®*

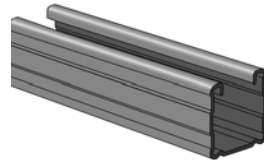
Epoxy-Tie Set Epoxy is a two-component, low order, 1:1 ratio, 100% solids epoxy-based adhesive for use as a high strength, non-shrink anchor grouting material. Resin and hardener are dispensed and mixed simultaneously through the mixing nozzle. Set meets or exceeds the ASTM C-881 specification for Type I, II, IV, and V, Grade 3, Class B and C.



MBS#
SET-PAC-EZ

**UNISTRUT**  
**Solid Channel**  
*1-5/8" Series*

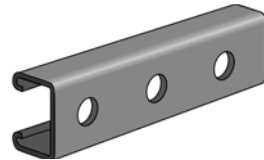
- Allowable Moment 4,170 In-Lbs (470 Nm)
- 14 Gauge Nominal Thickness .075" (1.9mm)



MBS#
P1100

**UNISTRUT**  
**Round Hole Channel**

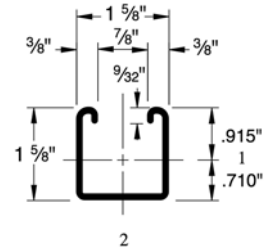
- Channel Dimensions (w x h): 1-5/8" x 13/16"
- Gauge: 14
- 9/16" dia. holes, 1-7/8" on center



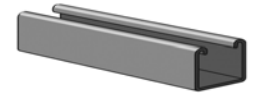
MBS#
P4100HS

**UNISTRUT**  
**Solid Channels**  
*No Hole*

- Channel Dimensions (w x h): 1-5/8" x 1-5/8"
- Allowable Moment: 5,070 in-lbs
- Gauge: 12
- Nominal Thickness: .105"

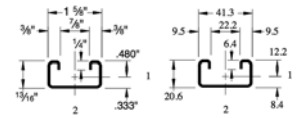


MBS#	Finish
<b>10' Length</b>	
P1000 10 GR	Perma-Green
P1000 10HG	Hot Dip Galvanized
P1000 10 PG	Pregalvanized Zinc
P1000ZD	Perma-Gold Zinc
<b>20' Length</b>	
P1000 20 GR	Perma-Green
P1000 20HG	Hot Dip Galvanized
P1000 20 PG	Pregalvanized Zinc
P1000 20 SS	Stainless Steel

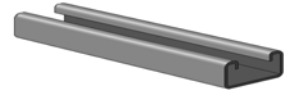


**UNISTRUT**  
**Solid Channel**  
*1-5/8" Series*

- 1-5/8" x 13/16"
- Allowable Moment 1,330 In-Lbs (150 Nm)
- 14 Gauge Nominal Thickness .075" (2.7mm)
- Length: 20'

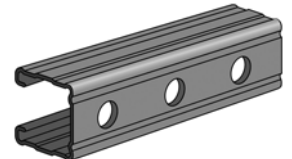


MBS#	Finish
P4100 20GR	Perma-Green
P4100 20PG	Pregalvanized



**UNISTRUT**  
**Round Hole Channel**

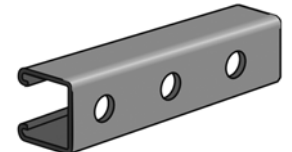
- Channel Dimensions (w x h): 1-5/8" x 1-5/8"
- Gauge: 12
- 9/16" dia. holes, 1-7/8" on center



MBS#
P1000H3

**UNISTRUT**  
**Round Hole Channel**

- Channel Dimensions (w x h): 1-5/8" x 1-5/8"
- Allowable Moment: 5,070 in-lbs
- Gauge: 12
- Nominal Thickness: .105"
- 9/16" dia. holes, 1-7/8" on center



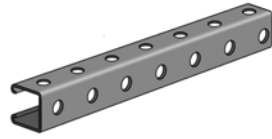
MBS#	Finish
P1000HS 20PG	Pregalvanized Zinc

**When only the best will do,  
 Call MBS Tool and Fastener**



**UNISTRUT**  
**Round Holes Channels**  
*On all 3 Sides*

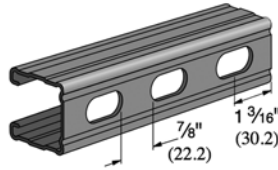
- Channel Dimensions (w x h): 1-5/8" x 1-5/8"
- 9/16" (14.3) Dia. holes. 1-7/8" (47.6) on center.
- 12 Gage



MBS#
P1000H3

**UNISTRUT**  
**Slotted Channel**

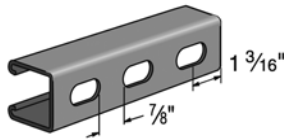
- Channel Dimensions (w x h): 1-5/8" x 1-5/8"
- Gauge: 14
- Slots are: 1-1/8" x 9/16", 2" on Center



MBS#
P1100T

**UNISTRUT**  
**Slotted Channels**  
*T Series*

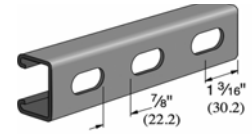
- Channel Dimensions (w x h): 1-5/8" x 1-5/8"
- Allowable Moment: 5,070 in-lbs
- Gauge: 12
- Nominal Thickness: .105"
- Slots are: 1-1/8" x 9/16", 2" on Center



MBS#	Finish
<b>10' Length</b>	
P1000T 10 GR	Perma-Green
P1000T 10HG	Hot Dip Galvanized
P1000T 10 PG	Pregalvanized
P1000T 10 ZD	Perma-Gold Zinc
<b>20' Length</b>	
P1000T 20 GR	Perma-Green
P1000T 20HG	Hot Dip Galvanized
P1000T 20 PG	Pregalvanized
P1000T 20PL	Plain
P1000T 20 SS	Stainless Steel
P1000T 20 ZD	Perma-Gold Zinc

**UNISTRUT**  
**Slotted Channel**

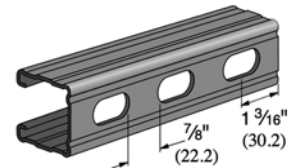
- Channel Dimensions (w x h): 1-5/8" x 13/16"
- 14 Gage
- Slot are 1-1/8" (28.6) x 9/16" (14.3). 2" (51) on center.



MBS#	Finish
<b>10' Length</b>	
P4100T 10HG	Hot Dip Galvanized Zinc
P4100T 10 PG	Pregalvanized Zinc
P4100T 10SS	Stainless Steel
P4100T 10 ZD	Perma-Gold
<b>20' Length</b>	
P4100T 20GR	Perma-Green
P4100T 20HG	Hot Dip Galvanized Zinc
P4100T 20 PG	Pregalvanized Zinc
P4100T 20SS	Stainless Steel
P4100T 20 ZD	Perma-Gold

**UNISTRUT**  
**Knockout Channels**

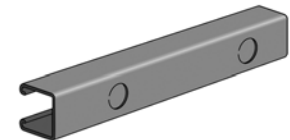
- Channel Dimensions (w x h): 1-5/8" x 1-5/8"
- 7/8" (22.2) Knockouts; 6" (152.4) on Center
- Gauge: 14



MBS#
P1100KO

**UNISTRUT**  
**Knockout Channels**

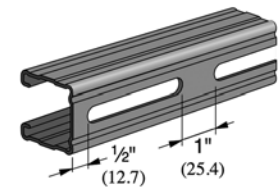
- Channel Dimensions (w x h): 1-5/8" x 1-5/8"
- 7/8" (22.2) Knockouts; 6" (152.4) on Center
- Gauge: 12



MBS#
P1000KO

**UNISTRUT**  
**Long Slots Channel**

- Channel Dimensions (w x h): 1-5/8" x 1-5/8"
- Slot are 3" (76.2) x 13/32" (10.3). 4" (101.6) on center.
- 14 Gage



MBS#
P1100SL

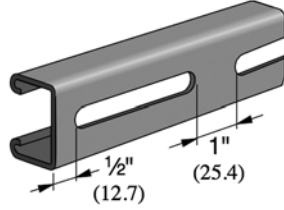
*Call us for all your fastener needs.*



UNISTRUT  
**Long Slots Channel**

- Channel Dimensions (w x h): 1-5/8" x 13/16"
- Slot are 3" (76.2) x 13/32" (10.3). 4" (101.6) on center.
- Length: 20'
- Finish: Pregalvanized Zinc

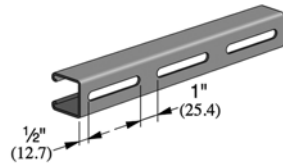
MBS#  
P4100SL 20PG



UNISTRUT  
**Long Slots Channel**

- Channel Dimensions (w x h): 1-5/8" x 1-5/8"
- Slot are 3" (76.2) x 13/32" (10.3). 4" (101.6) on center.
- 12 Gage

MBS#  
P1000SL



UNISTRUT  
**Double Slots Channel**

- Channel Dimensions (w x h): 1-5/8" x 1-5/8"
- Slot are 2-3/4" (69.9) x 7/8" (22.2). 3-1/2" (88.9) on center.
- 12 Gage
- Pipe clamps can be mounted on both sides

MBS#  
P1000DS

